

# **Monthly Statistics of Building Materials and Components**

December 2011

No. 442

## NOTES

In tables where figures have been rounded to the nearest final digit, there may be an apparent slight discrepancy between the sum of the constituent items and the total as shown.

Symbols. The following symbols have been used throughout.

.. = not available                      (P) = provisional  
- = nil or negligible                      (R) = revised

All figures are subject to revisions.

The full set of revised bricks data covering January 2009 to February 2011 for tables 9 and 10, as noted in the table footnotes, are available on our website:

<http://www.bis.gov.uk/analysis/statistics/construction-statistics/building-materials>

Unless otherwise stated, revisions are due to more complete information from late returns. If any figures are revised by 5% or more from the previously published value, an explanation will be provided.

### **A National Statistics publication**

National Statistics are produced to high professional standards set out in the National Statistics Code of Practice. They undergo regular quality assurance reviews to ensure they meet customer needs.

Unless otherwise stated, the statistics published in this volume have been collected by the Office for National Statistics on behalf of the Department for Business, Innovation & Skills.

Lead Statistician: James Liley

For enquiries or further information about the contents of this publication please contact:

Construction Market Intelligence, 1 Victoria Street,  
London, SW1H 0ET;  
Telephone : 020 - 7215 - 6221  
E-mail : [materialstats@bis.gsi.gov.uk](mailto:materialstats@bis.gsi.gov.uk).

URN 11/313I

11 January 2012

ii

## CONTENTS

	<u>Page</u>
Table 1 : Construction Material Price Indices	1
Table 2 : Price Indices of Construction Materials – monthly	2 & 3
Table 3 : Price Indices of Construction Materials – annual averages	4
Table 4 : Sales of Sand and Gravel in Great Britain	5
Table 5 : Sales of Sand and Gravel by English Regions, Wales and Scotland	6 & 7
Table 6 : Sales of Sand and Gravel by English and Welsh Counties and Scottish Regions	8 & 9
Table 7 : Slate : Production, Deliveries and Stocks	10
Chart 1 : Deliveries of Sand & Gravel and Ready-Mixed Concrete	11
Table 8 : Cement and Clinker : Production, Deliveries and Stocks	12
Chart 2 : Deliveries of Bricks, Concrete Building Blocks and Cement	13
Table 9 : Bricks : Production, Deliveries and Stocks for Great Britain	14 & 15
Table 10 : Bricks : Production, Deliveries and Stocks by English Regions, Wales and Scotland	16 to 19
Table 11 : Concrete Building Blocks : Production, Deliveries and Stocks for Great Britain	20 & 21
Table 12 : Concrete Building Blocks : Production, Deliveries and Stocks by English Regions, Wales and Scotland	22 & 23
Table 13 : Concrete Roofing Tiles and Ready-Mixed Concrete	24
Chart 3 : Comparison of Imports and Exports	25
Table 14 : Value of Overseas Trade in Selected Materials and Components for Constructional Use : Imports (cif) and Exports (fob)	26 to 35



Table 1: Construction Material Price Indices

United Kingdom	2005 = 100					
	2006	2007	2008	2009	2010	2011
<b>(a) New Housing</b>						
January	101.6	109.8	115.3	119.7	122.3	130.1
February	102.6	111.7	116.8	120.6	122.9	131.2
March	103.4	112.4	117.5	120.6	123.4	132.0
April	103.6	112.3	118.2	120.2	125.2	132.6
May	104.6	113.7	119.0	119.8	127.2	133.4
June	105.8	114.4	118.7	119.5	128.3	134.6
July	106.5	115.2	120.0	119.1	129.0	135.0
August	107.6	116.3	120.5	120.2	129.5	135.7
September	107.7	116.3	120.4	121.0	129.9	136.0 (P)
October	108.8	116.4	121.1	121.7	129.8	135.1 (P)
November	109.5	116.0	120.4	122.6	130.2	135.2 (P)
December	110.0	115.8	119.7	122.3	129.9	
Annual Average	106.0	114.2	119.0	120.6	127.3	
<b>(b) Other New Work</b>						
January	100.5	110.1	114.3	122.9	124.6	135.1
February	101.7	111.7	116.2	122.1	125.0	137.1
March	102.7	112.1	117.3	121.6	125.9	139.1
April	103.1	112.0	119.2	120.7	129.4	141.3
May	104.4	112.9	121.6	120.7	132.0	142.5
June	105.6	113.3	123.7	120.7	133.8	143.5
July	106.8	113.9	126.4	120.7	133.1	143.4
August	108.3	114.8	127.7	120.9	132.8	143.6
September	108.7	114.4	128.6	121.8	132.9	144.1 (P)
October	109.5	114.5	129.3	123.5	132.5	142.8 (P)
November	109.6	114.0	126.6	125.3	132.3	143.2 (P)
December	109.9	113.6	124.7	125.0	132.3	
Annual Average	105.9	113.1	123.0	122.2	130.6	
<b>(c) Repair and Maintenance</b>						
January	101.6	111.0	116.0	122.1	125.2	134.3
February	102.4	112.9	117.2	122.0	126.1	135.7
March	103.5	113.5	117.9	121.6	126.4	136.7
April	103.9	113.3	119.2	121.2	128.4	137.6
May	104.8	114.4	120.4	121.0	131.0	138.5
June	106.1	115.3	121.2	120.7	132.2	139.6
July	106.9	116.0	122.9	120.6	132.9	140.4
August	108.5	116.9	123.7	121.7	133.4	141.2
September	109.0	117.2	123.8	122.8	133.7	141.4 (P)
October	110.2	117.2	124.7	123.9	133.7	140.8 (P)
November	110.8	116.6	123.5	125.2	134.2	140.8 (P)
December	111.4	116.4	122.4	125.0	133.8	
Annual Average	106.6	115.1	121.1	122.3	130.9	
<b>(d) All Work</b>						
January	101.2	110.6	115.3	122.5	124.6	134.2
February	102.1	112.3	116.9	122.0	125.2	135.9
March	103.1	112.8	117.9	121.6	125.9	137.4
April	103.5	112.6	119.2	121.0	128.5	139.2
May	104.7	113.8	121.0	120.9	131.0	140.2
June	105.8	114.3	122.3	120.7	132.6	141.3
July	106.9	114.7	124.4	120.6	132.4	141.5
August	108.4	115.8	125.7	121.1	132.5	141.9
September	108.7	116.0	126.2	122.1	132.5	142.4 (P)
October	109.8	116.0	126.9	123.4	132.2	141.2 (P)
November	110.2	115.5	125.0	124.9	132.4	141.3 (P)
December	110.6	115.2	123.5	124.7	132.0	
Annual Average	106.3	114.1	122.0	122.1	130.2	

Note: These indices are weighted averages of Producer Price Indices. They do not include electrical or mechanical engineering materials.

Source ONS/BIS

# PRICES

**Table 2: Price Indices of Construction Materials**

United Kingdom

	2010		2011					
	Nov	Dec	Jan	Feb	Mar	Apr	May	
<b>AGGREGATES</b>								
Crushed rock	- including levy	118.6	120.1	122.8	117.3	117.4	119.4	120.8
	- excluding levy	115.1	118.5	122.3	117.0	117.0	119.6	121.2
Sand & gravel	- including levy	122.5	122.3	123.7	119.4	120.5	120.5	119.9
	- excluding levy	122.8	122.1	124.0	118.5	119.6	119.7	120.9
Coated roadstone	- including levy	..	..	..	..	..	..	..
	- excluding levy	135.8	135.1	138.4	139.9	140.0	140.4	138.5
Previous Index Crushed rock	- including levy	..	..	..	..	..	..	..
	- excluding levy	..	..	..	..	..	..	..
Previous Index Sand & gravel	- including levy	..	..	..	..	..	..	..
	- excluding levy	..	..	..	..	..	..	..
<b>CEMENT AND CONCRETE</b>								
Cement		133.2	133.0	134.3	134.5	135.0	134.7	134.9
Ready-mixed concrete		110.4	111.3	112.8	111.3	111.1	112.3	115.6
Pre-cast concrete products		118.1	118.3	119.4	121.0	121.2	121.0	121.0
of which : Blocks, bricks, tiles & flagstones		121.8	122.1	123.2	125.5	125.7	125.3	125.4
Concrete reinforcing bars		145.3	146.3	160.1	165.4	165.2	167.6	167.1
<b>CLAY PRODUCTS</b>								
All Bricks		119.3	118.9	117.2	118.1	117.3	118.3	119.5
Ceramic tiles *		91.5	91.5	91.3	90.5	90.7	91.7	91.3
Ceramic sanitaryware *		135.3	135.3	137.2	137.2	137.3	148.9	148.9
<b>TIMBER AND JOINERY</b>								
Imported sawn or planed wood		159.2	157.8	155.1	153.8	152.8	152.5	153.2
Imported plywood		120.8	121.5	114.2	114.0	115.2	116.3	117.0
Previous Index Imported hardwood *		..	..	..	..	..	..	..
Previous Index Imported softwood *		..	..	..	..	..	..	..
Previous Index Imported plywood *		..	..	..	..	..	..	..
Sawn wood		138.8	138.4	137.1	137.0	141.1	141.3	143.1
Particle Board		123.3	123.7	124.4	126.7	128.2	129.2	131.4
Builders woodwork		127.9	128.6	127.7	128.8	128.8	129.0	129.4
of which : Doors & windows		132.4	132.6	132.6	135.5	135.6	135.7	136.5
<b>METAL PRODUCTS</b>								
Fabricated structural steel		124.0	122.0	122.8	126.2	130.1	135.9	139.0
Doors & windows **		92.1	93.0	93.2	93.2	93.4	93.6	93.5
Central heating boilers *		114.2	116.1	117.2	117.2	117.2	117.2	117.2
Taps and Valves for sanitaryware *		159.4	159.5	161.1	163.5	164.3	166.7	169.6
<b>PLASTIC PRODUCTS</b>								
Pipes and fittings (rigid)		123.0	123.5	123.9	123.6	124.0	126.0	127.1
Pipes and fittings (flexible)		132.3	132.3	132.3	132.3	132.3	132.3	133.7
Sanitaryware		115.2	115.2	115.4	115.4	115.4	115.4	116.0
Doors & windows **		108.8	108.9	108.7	108.8	110.0	110.0	109.9
<b>OTHER BUILDING MATERIALS</b>								
Asphalt products *		163.8	167.8	173.6	174.9	174.6	172.5	179.1
Insulating materials (thermal or acoustic)		103.6	103.1	102.9	103.3	105.5	110.6	108.6
Paint (aqueous)		..	..	..	..	..	..	..
Paint (non-aqueous)		115.4	115.5	119.9	119.9	119.9	119.9	121.0
Lighting equipment for buildings *		104.7	104.7	105.2	105.4	105.4	105.4	105.4
Lighting equipment for roads		111.1	111.1	111.3	111.5	112.9	112.9	112.9
Electric water heaters *		137.8	138.4	138.6	139.0	143.3	141.4	141.5
Kitchen furniture		108.6	108.6	108.9	109.0	109.0	109.2	109.2

Notes : 1. Most of these indices, which are compiled by the Office for National Statistics, are a selection of producer price indices. The complete list is available online at [www.statistics.gov.uk](http://www.statistics.gov.uk), by searching for the reference MM22.

\*The Office for National Statistics state that these Indices are based on relatively few quotes and in the long term should not be relied upon for contractual purposes.

\*\* These index values are considered less reliable mainly due to lack of market coverage.

# PRICES

2005=100

Jun	Jul	Aug	Sep	Oct	Nov	
				(P)	(P)	
						<b>AGGREGATES</b>
119.4	120.0	123.9 (P)	122.2 (P)	122.7	122.3	Crushed rock - including levy
118.8	120.0	125.2 (P)	122.7 (P)	123.0	122.5	- excluding levy
120.8	122.1	121.6 (P)	122.7 (P)	123.8	123.3	Sand & gravel - including levy
120.1	121.7	121.2 (P)	122.4 (P)	123.6	123.1	- excluding levy
..	..	..	..	..	..	Coated roadstone - including levy
140.5	140.4	141.6	139.5	139.6	139.9	- excluding levy
..	..	..	..	..	..	Previous Index Crushed rock - including levy
..	..	..	..	..	..	- excluding levy
..	..	..	..	..	..	Previous Index Sand & gravel - including levy
..	..	..	..	..	..	- excluding levy
						<b>CEMENT AND CONCRETE</b>
135.7	135.5 (R)	135.7	135.6	135.8	136.0	Cement
114.4	114.1	114.5	114.7	115.3	115.4	Ready-mixed concrete
121.3	121.7	121.1	120.8	120.9	120.5	Pre-cast concrete products
125.6	126.3	125.4	125.0	125.1	125.1	of which : Blocks, bricks, tiles & flagstones
170.2	171.0	173.1 (P)	172.6 (P)	170.7	168.8	Concrete reinforcing bars
						<b>CLAY PRODUCTS</b>
119.2	120.9	120.8	120.9	120.4	119.6	All Bricks
91.5	91.1	90.8	90.8	90.7	90.7	Ceramic tiles *
148.9	148.9	148.5	148.8	148.8	148.8	Ceramic sanitaryware *
						<b>TIMBER AND JOINERY</b>
153.7	155.7	156.1	156.1	153.7	153.0	Imported sawn or planed wood
118.1	118.3	117.2	118.7	118.1	118.9	Imported plywood
..	..	..	..	..	..	Previous Index Imported hardwood *
..	..	..	..	..	..	Previous Index Imported softwood *
..	..	..	..	..	..	Previous Index Imported plywood *
143.2	144.0	144.6	143.8	142.7	142.2	Sawn wood
133.7	137.3	137.0 (P)	137.5 (P)	137.5	137.5	Particle Board
129.7	129.7	130.2	130.3 (P)	130.7	130.9	Builders woodwork
136.7	136.7	137.4	137.5 (P)	137.1	136.9	of which : Doors & windows
						<b>METAL PRODUCTS</b>
138.8	135.7	134.8 (P)	134.6 (P)	132.2	131.2	Fabricated structural steel
93.7	93.0	92.9 (P)	92.8 (P)	98.2	102.8	Doors & windows **
117.5	117.6	117.6	118.1	118.1	118.1	Central heating boilers *
170.7	173.8	172.7	170.1	171.3	171.3	Taps and Valves for sanitaryware *
						<b>PLASTIC PRODUCTS</b>
127.2	127.5	128.9	130.2	130.5	129.4	Pipes and fittings (rigid)
135.1	135.2	135.1	135.2	135.2	135.5	Pipes and fittings (flexible)
116.0	116.5	116.5	116.5	116.5	116.5	Sanitaryware
110.2	111.2	112.2	112.3	112.3	112.2	Doors & windows **
						<b>OTHER BUILDING MATERIALS</b>
179.6	181.6	179.9	180.4	181.9	..	Asphalt products *
109.4	109.3	109.4	112.7	113.9	114.8	Insulating materials (thermal or acoustic)
..	..	..	..	..	132.4	Paint (aqueous)
121.4	121.5	122.5	122.6	122.6	126.7	Paint (non-aqueous)
..	..	..	..	..	..	Lighting equipment for buildings *
107.9	109.0	109.0 (P)	109.0 (P)	109.1	111.8	Lighting equipment for roads
141.5	142.2	142.6	145.2	145.2	143.8	Electric water heaters *
109.9	114.5	115.2	115.2	116.0	115.9	Kitchen furniture

Source : ONS

Note: Due to the change from SIC03 to SIC07 the composition of the Aggregate and Wood Indices has been altered. As such we will publish the Previous Indices alongside the Current Indices.

# PRICES

## Table 3: Price Indices of Construction Materials - Annual Averages

United Kingdom		2005=100					
		2005	2006	2007	2008	2009	2010
<b>AGGREGATES</b>							
Crushed rock	- including levy	..	..	..	..	110.0	115.5
	- excluding levy	..	..	..	..	103.1	110.8
Sand & gravel	- including levy	..	..	..	..	116.2	121.1
	- excluding levy	..	..	..	..	115.8	121.1
Coated roadstone	- including levy	100.0	108.2	113.8	130.0	140.8	..
	- excluding levy	99.9	107.5	113.7	129.7	140.4	134.9
Previous Index Crushed rock	- including levy	98.6	96.1	95.2	103.4	112.3	..
	- excluding levy	98.4	94.5	93.6	100.6	108.4	..
Previous Index Sand & Gravel	- including levy	101.2	105.3	109.9	117.5	112.0	..
	- excluding levy	100.9	105.7	110.9	116.3	107.5	..
<b>CEMENT AND CONCRETE</b>							
Cement		100.0	108.8	114.7	128.4	138.5	133.2
Ready-mixed concrete		100.6	107.7	106.7	113.4	110.8	110.5
Plasterboard etc		100.1	99.3	101.8	104.7	..	..
Pre-cast concrete products		100.0	102.3	110.6	114.4	118.7	117.4
	of which: Blocks, bricks, tiles & flagstones	100.0	103.3	112.8	115.4	121.1	121.0
Concrete re-inforcing bars		100.0	112.9	129.8	158.3	125.9	144.6
Fibre Cement Products		100.1	106.7	116.8	124.2	..	..
<b>CLAY PRODUCTS</b>							
All Bricks		98.0	104.3	111.1	109.0	117.2	118.8
Ceramic tiles		98.7	102.0	84.8	81.0	82.6	90.1
Ceramic sanitaryware		100.1	102.5	112.6	119.9	130.7	134.4
<b>TIMBER AND JOINERY</b>							
Imported sawn or planed wood		..	..	..	..	127.9	152.5
Imported plywood		..	..	..	..	110.2	119.0
Previous Index Imported Softwood		100.3	107.9	133.6	123.6	127.5	..
Previous Index Imported Plywood		100.1	100.8	106.5	120.7	124.1	..
Sawn Wood		100.0	103.1	122.0	127.8	118.7	135.1
Particle Board		99.4	102.6	112.7	113.8	111.4	117.3
Builders woodwork		99.4	102.2	108.0	113.6	119.7	125.5
	of which						
	Doors & windows	99.7	101.7	108.7	116.7	127.1	130.9
<b>METAL PRODUCTS</b>							
Fabricated structural steel		100.0	99.8	118.1	137.2	106.0	117.9
Doors & windows		101.4	101.2	87.5	87.0	89.8	91.2
Screws etc		94.4	106.1	105.9	106.6	..	..
Other builders' ironmongery		99.9	102.4	105.3	108.5	..	..
Central heating boilers		99.9	102.3	105.0	106.3	109.8	113.4
Central heating pumps		100.7	108.2	114.5	120.2	..	..
Taps & valves (domestic)		98.7	..	..	136.6	152.1	158.2
Metal sanitaryware		100.0	103.5	108.3	106.3	..	..
Copper pipes		108.5	168.1	163.2	154.1	..	..
<b>PLASTIC PRODUCTS</b>							
Pipes and fittings (rigid)		99.2	103.9	112.2	118.1	121.4	121.5
Pipes and fittings (flexible)		99.8	104.4	110.6	115.3	129.9	130.3
Sanitaryware		100.2	100.9	102.6	112.0	113.7	114.7
Doors & windows		99.9	101.3	103.5	106.2	107.9	108.1
Floor covering		100.1	107.8	109.8	..	..	..
<b>OTHER BUILDING MATERIALS</b>							
Asphalt products		98.4	120.6	132.2	140.4	151.4	162.1
Insulating materials (thermal or acoustic)		99.9	102.5	106.0	105.6	104.0	103.2
Paint (aqueous)		99.8	101.7	104.6	112.7	118.3	..
Paint (non-aqueous)		99.7	100.8	102.6	110.0	113.0	114.0
Lighting equipment for buildings		100.1	..	..	102.3	107.4	107.5
Lighting equipment for roads		99.5	98.7	100.9	105.2	112.3	110.6
Electric heating apparatus		100.0	101.8	105.4	112.0	..	..
Electric water heaters		100.4	111.6	119.8	122.3	132.6	136.7
Kitchen furniture		100.0	96.7	99.7	103.6	106.6	109.1

Source : ONS

Note 1: Due to the change from SIC03 to SIC07 the composition of the Aggregate and Wood Indices has been altered. As such we will publish the Previous Indices alongside the Current Indices.

Note 2: These indices, which are compiled by the Office for National Statistics, are a selection of producer price indices. The complete list is published monthly by the ONS in the Business Monitor MM22.

# MINING AND QUARRYING

**Table 4 : Sales of Sand and Gravel in Great Britain**

Great Britain		Thousand tonnes					
	<b>Sand</b>		<b>Gravel</b>	<b>Sand &amp; Gravel</b>	<b>Sand, Gravel &amp; Hoggin</b>	<b>Sand &amp; Gravel</b>	of which
	for Building	for Concreting	for Concreting & other uses	for Coating	for Fill	Total	<b>Marine-Dredged</b>
2000	12,105	30,128	30,355	2,150	13,127	87,865	14,356
2001	13,926	33,675	36,799	2,596	10,460	97,456	13,611
2002	11,152	30,334	35,642	2,106	6,279	85,513	12,833
2003	11,474	31,349	31,725	1,493	6,498	82,539	12,249
2004	11,017	32,366	30,184	1,380	6,399	81,346	12,996
2005	12,419	30,704	30,648	1,569	5,173	80,513	13,025
2006	9,499	29,893	31,963	2,346	4,195	77,896	13,974
2007	8,649	29,803	31,114	1,695	4,254	75,515	13,777
2008	8,864	28,922	28,297	..	..	74,651	12,582
2009	7,270	21,582	..	..	..	58,482	9,589
2010	6,074	19,887	..	..	..	54,530	9,341
2005 Q3	3,246	8,054	8,201	398	1,422	21,321	3,491
Q4	2,565	6,980	6,950	356	1,212	18,063	2,975
2006 Q1	2,189	7,100	7,058	523	919	17,789	2,927
Q2	2,582	8,126	9,032	623	1,174	21,537	4,531
Q3	2,603	7,725	8,602	640	1,144	20,714	3,498
Q4	2,125	6,942	7,271	560	958	17,856	3,018
2007 Q1	2,081	6,919	7,242	443	904	17,589	3,177
Q2	2,305	7,762	8,202	432	1,179	19,880	3,596
Q3	2,304	7,829	8,191	398	1,162	19,884	3,675
Q4	1,959	7,293	7,479	422	1,009	18,162	3,329
2008 Q1	2,151	7,156	7,286	379	1,180	18,152	3,035
Q2	2,385	7,724	7,668	456	2,041	20,274	3,541
Q3	2,279	7,644	7,091	..	..	19,341	3,337
Q4	2,049	6,398	6,252	490	1,695	16,884	2,669
2009 Q1	1,727	5,313	5,330	695	1,566	14,631	2,389
Q2	1,916	5,637	5,756	..	..	15,359	2,637
Q3	1,992	5,598	..	..	..	14,878	2,457
Q4	1,635	5,034	..	..	1,432	13,614	2,106
2010 Q1	1,539	4,952	..	..	..	13,711	2,131
Q2	1,585	4,983	..	..	..	13,940	2,444
Q3	1,584	5,268	..	..	..	14,112	2,592
Q4	1,366	4,684	..	..	..	12,767	2,174
2011 Q1	1,572	5,665	..	..	..	14,150	2,746
Q2	1,579	6,127	5,291	..	..	14,831	2,923
Q3	1,533	6,085	5,160	..	..	14,684	2,937

Note : The figures above are from a quarterly sample inquiry whereas those below are from the Annual Minerals Raised Inquiry, a census.

The two inquiries differ because some respondents are only able to provide estimated information for the quarterly inquiry.

1999	11,356	31,730	31,614	2,585	10,924	88,209	13,424
2000	11,758	31,167	31,797	2,461	12,051	89,234	14,356
2001	11,515	31,656	35,135	2,257	7,647	88,210	13,611
2002	11,190	31,224	32,434	2,031	5,842	82,721	12,832
2003	11,851	31,411	30,236	1,766	4,957	80,221	12,131
2004	10,688	32,529	32,346	2,437	8,058	86,057	12,996
2005	11,558	29,848	32,163	2,172	6,651	82,392	13,024
2006	9,907	29,815	31,002	2,648	6,869	80,242	13,974
2007	9,877	30,202	29,350	2,636	6,436	78,501	13,777
2008	8,527	26,885	23,388	2,222	11,106	72,127	12,621
2009	6,296	21,570	19,553	2,270	6,021	55,709	9,592

# MINING AND QUARRYING

**Table 5 : Sales of Sand and Gravel by Standard region, Wales and Scotland**

	<b>Sand</b>		<b>Gravel</b>	<b>Sand &amp; Gravel</b>	<b>Sand, Gravel &amp; Hoggin</b>	<b>Sand &amp; Gravel</b>	of which
	for Building	for Concreting	for Concreting & other uses	for Coating	for Fill	Total	<b>Marine-Dredged</b>
<b>(a) Q3 2011</b>							
North East	24	..	..	..	57	..	..
Yorkshire & the Humber	149	367	343	..	91	..	..
North West	191	..	..	32	31	485	24
West Midlands	114	636	611	..	..	1,455	0
East Midlands	120	691	496	..	..	1,484	0
East of England	252	1,048	924	..	230	..	..
South East	262	1,510	1,646	45	..	3,753	2,298
South West	137	742	223	..	..	1,509	130
Wales	113	213	..	..	..	460	213
Scotland	171	528	639	94	236	1,668	0
Great Britain	1,533	6,085	5,160	..	..	14,684	2,937
of which marine-dredged	135	1,414	1,278	..	..	2,937	
<b>(b) Q3 2010</b>							
North East	25	..	..	..	17	..	..
Yorkshire & the Humber	127	333	313	526	..	..	..
North West	232	195	..	42	..	497	28
West Midlands	122	556	611	..	..	1,395	0
East Midlands	132	630	561	58	71	1,452	0
East of England	246	840	968	..	187	..	..
South East	202	1,337	1,452	61	202	3,254	2,025
South West	132	548	..	..	285	1,507	127
Wales	161	..	80	..	30	410	191
Scotland	205	534	468	111	134	1,452	0
Great Britain	1,584	5,268	..	..	..	14,112	2,592
of which marine-dredged	162	1,225	..	..	..	2,592	

Note : Regions refer to Government Office Regions

# MINING AND QUARRYING

Thousand tonnes

	<b>Sand</b>		<b>Gravel</b>	<b>Sand &amp; Gravel</b>	<b>Sand, Gravel &amp; Hoggin</b>	<b>Sand &amp; Gravel</b>	of which
	for Building	for Concreting	for Concreting & other uses	for Coating	for Fill	Total	<b>Marine-Dredged</b>
<b>(c) Annual 2010</b>							
North East	71	..	..	..	136	..	..
Yorkshire & the Humber	455	..	1,160	2,104	..	..	..
North West	873	..	..	167	..	1,956	97
West Midlands	..	2,136	2,624	..	..	5,704	0
East Midlands	438	2,380	2,106	236	259	5,419	0
East of England	871	3,180	3,571	..	674	..	..
South East	945	4,756	5,567	214	969	12,451	7,249
South West	538	2,072	..	..	1,132	5,697	453
Wales	548	..	..	..	175	1,730	732
Scotland	..	2,130	1,940	441	..	5,942	0
Great Britain	6,074	19,887	..	..	..	54,530	9,341
of which marine-dredged	534	4,300	..	..	..	9,341	
<b>(d) Annual 2009</b>							
North East	76	..	..	..	..	..	..
Yorkshire & the Humber	659	1,356	1,362	278	198	3,853	53
North West	811	1,055	..	104	..	2,327	132
West Midlands	885	2,855	3,104	..	287	..	0
East Midlands	542	2,630	2,609	114	318	6,213	0
East of England	..	..	..	619	..	..	..
South East	..	4,626	..	..	1,293	14,036	7,318
South West	..	2,314	..	..	987	..	451
Wales	537	..	..	..	..	..	..
Scotland	692	2,150	1,722	425	736	5,725	0
Great Britain	7,270	21,582	..	..	..	58,482	9,589
of which marine-dredged	524	4,200	..	..	..	9,589	

Note : Regions refer to Government Office Regions

# MINING AND QUARRYING

## Table 6 : Sales of Sand and Gravel by English & Welsh County and Scottish Region

Thousand tonnes

	2010			2011		
	Quarter 2	Quarter 3	Quarter 4	Quarter 1	Quarter 2	Quarter 3
<b>NORTH EAST</b>	..	..	366	465	..	..
Northumberland	236	253	236	261	236	189
Tyne and Wear *	..	..	28	..	..	..
Durham	..	..	..	..	..	..
Cleveland *	..	..	..	..	..	..
<b>YORKSHIRE &amp; THE HUMBER</b>	..	..	1,202	..	..	..
North Yorkshire	385	434	357	479	544	533
West Yorkshire	50	53	44	44	51	..
South Yorkshire	628	640	609	..	..	171
Humberside *	..	..	192	..	..	..
<b>NORTH WEST</b>	474	497	476	497	480	485
Cumbria	127	130	125	127	122	122
Lancashire	69	72	69	47	46	46
Merseyside *	19	28	27	26	25	24
Greater Manchester	64	66	63	71	68	71
Cheshire	195	201	192	226	219	222
<b>WEST MIDLANDS</b>	1,426	1,395	1,316	1,472	1,436	1,455
Shropshire	..	117	111	152	148	150
Staffordshire	1,007	971	917	914	897	913
West Midlands	..	..	56	..	..	..
Warwickshire	117	..	107	172	169	170
Hereford & Worcester	131	133	125	..	..	..
<b>EAST MIDLANDS</b>	1,281	1,452	1,244	1,370	1,511	1,484
Derbyshire	188	212	..	204	225	221
Nottinghamshire	400	449	387	365	401	394
Leicestershire	194	..	..	228	254	251
Northamptonshire	52	..	50	69	76	75
Lincolnshire	447	509	438	504	555	543
<b>EAST OF ENGLAND</b>	..	..	..	..	..	..
Cambridgeshire	522	551	488	528	559	553
Norfolk	369	386	337	336	349	346
Suffolk *	..	..	..	..	..	..
Essex *	..	..	..	..	..	..
Bedfordshire	256	..	..	..	..	..
Hertfordshire	..	..	..	..	..	..
<b>SOUTH EAST</b>	3,161	3,254	3,018	3,574	3,762	3,753
Buckinghamshire	104	104	116	93	109	113
Oxfordshire	88	80	89	73	74	83
Berkshire	177	176	203	206	217	219
Greater London *	820	908	..	947	1,051	1,081
Surrey	226	217	227	221	251	255
Kent *	805	836	714	976	978	981
Sussex East *	..	..	..	..	..	..
Sussex West *	..	164	144	..	..	213
Hampshire *	621	623	560	676	679	626
Isle of Wight	..	..	..	..	..	..

Note : Regions refer to Government Office Regions

\* Includes marine-dredged.

# MINING AND QUARRYING

Thousand tonnes

	2010			2011		
	Quarter 2	Quarter 3	Quarter 4	Quarter 1	Quarter 2	Quarter 3
<b>SOUTH WEST</b>	1,540	1,507	1,344	1,495	1,503	1,509
Gloucestershire	339	335	279	..	..	176
Wiltshire	230	226	200	161	163	165
Avon *	..	88	..	..	..	..
Somerset *	..	..	..	..	..	..
Dorset *	..	..	..	..	..	..
Devon *	..	..	157	..	..	..
Cornwall	..	243	..	428	423	436
<b>ENGLAND</b>	11,827	12,250	11,072	12,156	12,627	12,556
<b>WALES</b>	483	410	372	345	460	460
Clwyd	200	154	146	102	154	152
Gwynedd *	..	..	..	..	..	42
Powys	0	0	0	0	0	0
Dyfed *	..	82	..	..	..	..
Glamorgan West *	..	..	..	..	..	..
Glamorgan Mid	..	..	..	2	3	3
Glamorgan South *	..	32	..	..	..	..
Gwent *	..	..	..	..	..	..
<b>SCOTLAND</b>	1,630	1,452	1,323	1,649	1,744	1,668
South of Scotland	106	92	92	94	103	96
North East Scotland	223	201	175	285	303	302
Highlands	136	122	108	146	159	159
Island Areas	12	10	11	16	16	16
East Central Scotland	99	88	86	100	105	101
West Central Scotland	593	529	492	613	640	595
Tayside and Fife	461	410	359	395	418	399
<b>GREAT BRITAIN</b>	13,940	14,112	12,767	14,150	14,831	14,684

Note : Regions refer to Government Office Regions

\* Includes marine-dredged.

# MINING AND QUARRYING

## Table 7 : Slate - Production, Deliveries and Stocks

Great Britain

Tonnes

	Production			Deliveries			Stocks (a)			Deliveries
	Roofing (b)	Other (c)	Powder & Granules	Roofing (b)	Other (c)	Powder & Granules	Roofing (b)	Other (c)	Powder & Granules	Fill & Other Uses
1999	28,265	18,733	51,872	33,569	13,740	52,648	10,049	6,829	3,135	190,581
2000	28,815	12,399	44,644	33,341	11,670	44,923	5,519	7,356	2,856	328,547
2001	30,770	14,834	47,521	33,052	13,586	47,588	3,159	8,465	2,799	383,353
2002	32,182	18,348	44,424	32,653	19,069	43,947	2,674	7,850	3,275	498,212
2003	34,471	15,623	29,003	34,700	14,576	29,240	2,477	8,849	3,416	669,818
2004	..	..	..	..	..	..	..	..	..	..
2005	..	..	..	..	..	..	2,824	10,281	5,347	..
2006 (P)	..	61,612	22,967	..	64,037	22,719	..	6,454	4,274	860,395
2007	..	65,260	19,141	..	62,646	19,431	2,563	2,521	3,746	..
2008	..	59,644	16,915	..	58,129	18,402	..	2,749	2,253	..
2009	..	33,759	9,150	22,555	34,322	10,637	2,420	2,186	766	615,346
2010	..	28,001	..	..	27,355	..	..	3,063	..	582,111
2003 Q3	8,195	4,120	6,685	8,679	4,196	7,333	2,693	8,344	2,875	151,403
Q4	9,205	3,647	6,906	9,448	3,140	6,790	2,477	8,849	3,416	167,487
2004 Q1	9,397	4,432	7,288	8,379	4,619	7,460	3,469	8,777	3,242	158,552
Q2	9,031	3,596	8,083	10,135	3,499	7,328	2,365	8,874	3,997	154,407
Q3	..	8,029	7,544	..	8,578	7,049	3,954	8,225	4,592	158,333
Q4	..	..	..	..	..	..	..	..	..	..
2005 Q1	..	..	..	..	..	..	..	..	..	..
Q2	..	..	..	..	..	..	..	..	..	..
Q3	..	..	..	..	..	..	..	..	..	..
Q4	..	13,635	7,448	..	6,194	7,635	2,824	10,281	5,347	124,188
2006 Q1	..	11,594	6,575	..	12,879	6,406	3,170	8,967	5,440	195,762
Q2	..	14,804	5,051	..	14,983	5,257	3,079	7,424	3,990	223,696
Q3	..	16,170	5,194	..	16,803	5,094	..	6,792	4,090	251,314
Q4 (P)	..	19,044	6,147	..	19,372	5,962	..	6,454	4,274	189,623
2007 Q1	..	17,787	5,571	..	16,829	5,036	6,984	4,996	4,571	376,876
Q2	..	16,577	4,315	..	14,765	4,875	3,066	5,850	4,011	346,426
Q3	..	16,017	4,672	..	15,475	4,929	2,977	6,391	3,754	..
Q4	..	14,879	4,583	..	15,577	4,591	2,563	2,521	3,746	255,249
2008 Q1	..	18,608	4,282	..	18,071	4,414	..	3,059	3,594	246,495
Q2	..	15,465	4,738	..	14,457	4,862	..	3,801	3,484	..
Q3	..	13,811	3,843	..	13,841	5,511	3,851	2,749	1,816	..
Q4	..	11,760	4,052	..	11,760	3,615	..	2,749	2,253	..
2009 Q1	..	7,370	2,128	5,315	7,688	2,724	..	2,431	1,658	148,722
Q2	5,084	9,124	2,046	5,328	9,319	3,385	4,142	2,236	318	169,661
Q3	5,503	8,263	2,046	6,534	8,267	2,163	3,111	2,232	201	154,862
Q4	4,687	9,002	2,930	5,378	9,048	2,365	2,420	2,186	766	142,101
2010 Q1	..	6,772	..	..	6,662	..	..	2,296	..	88,805
Q2	..	7,517	..	..	7,388	..	2,049	3,284	683	175,098
Q3	..	7,335	..	..	7,184	..	1,326	3,332	281	159,574
Q4	4,907	6,377	..	4,909	6,121	..	..	3,063	..	158,634
2011 Q1	4,736	6,516	3,314	4,449	6,504	3,399	..	3,029	..	198,547
Q2	4,677	8,167	3,370	4,630	8,187	3,094	2,012	3,009	472	216,524
Q3	..	9,851	..	..	9,732	..	..	3,128	..	139,359

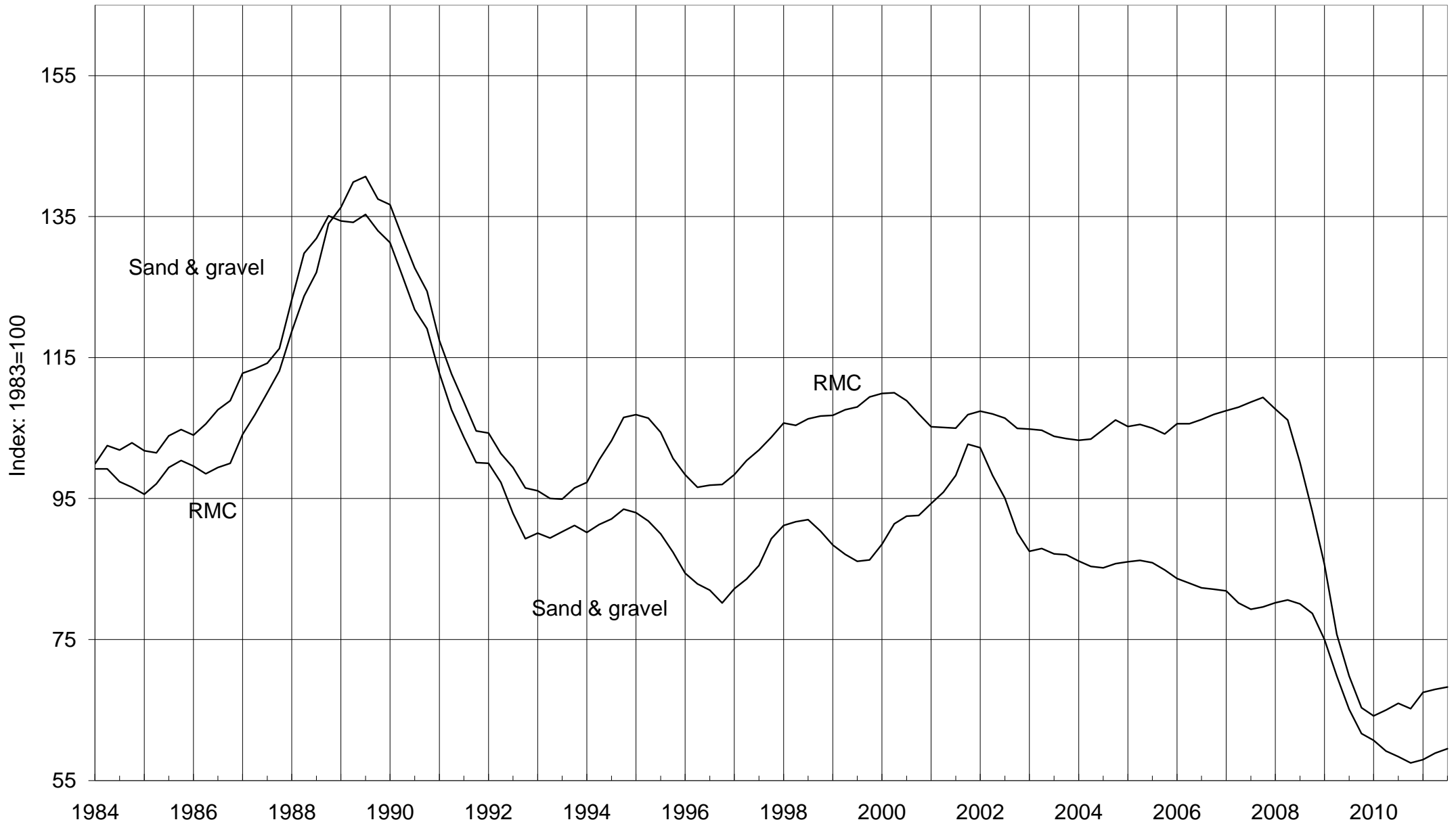
Note : 1) We have improved our sampling panel to include some new sites and have removed some non-pure slate sites. In line with the Code of Practice we have revised the data for Q2, Q3 and Q4 2010.

2) From Q1 1995, the coverage of 'powder & granules' has been extended to include non-quarry manufacture; and 'crude blocks' are included in 'other' manufacture slate.

- (a) Refers to stocks at the end of the period.
- (b) Consists of all slate tiles which could be used as roofing tiles.
- (c) Consists of all slate products for cladding and decorative uses

# Deliveries of Sand & Gravel and RMC

4-quarter moving average



The data is taken from Tables 4 & 13

**Table 8 : Cement & Clinker - Production, Deliveries and Stocks**

Great Britain

Thousand tonnes

		Cement						Clinker	
		Production		Deliveries	Imports (into GB)		Cementitious Material		Production
		of which	Exports	(into GB from	by	by	other	total	
		(from GB)	(from GB)	GB production)	'Manuf.	Others**			
2005		11,216	110	11,004	306	971	2,385	14,666	10,074
2006		11,469	127	11,221	124	1,089	2,648	15,082	10,069
2007		11,887	74	11,638	255	1,121	2,769	15,783	10,227
2008		10,071	61	9,937	283	1,084	2,432	13,660	8,700
2009		7,623	21	7,474	99	1,085	1,680	10,338	6,421
2010		7,883	0	7,767	61	1,153	1,535	10,515	6,598
2005	Q4	2,708	30	2,540	55	218	540	3,353	2,636
2006	Q1	2,647	25	2,737	28	269	601	3,635	2,127
	Q2	2,981	30	2,895	32	268	692	3,887	2,622
	Q3	2,990	37	2,917	40	303	732	3,992	2,654
	Q4	2,851	35	2,672	24	249	623	3,568	2,666
2007	Q1	2,678	27	2,779	43	271	643	3,735	2,021
	Q2	3,188	22	3,061	59	297	701	4,117	2,812
	Q3	3,130	9	3,011	84	294	746	4,135	2,751
	Q4	2,891	16	2,787	69	259	681	3,796	2,643
2008	Q1	2,609	18	2,551	88	268	598	3,505	2,267
	Q2	2,803	18	2,816	94	327	682	3,917	2,366
	Q3	2,520	13	2,496	72	263	648	3,445	2,202
	Q4	2,139	12	2,074	29	226	505	2,793	1,865
2009	Q1	1,762	14	1,782	37	256	410	2,485	1,378
	Q2	2,004	1	1,970	21	279	451	2,721	1,587
	Q3	1,998	5	1,999	25	283	453	2,760	1,831
	Q4	1,859	1	1,723	17	268	366	2,373	1,624
2010	Q1	1,726	0	1,744	24	246	336	2,350	1,261
	Q2	2,157	0	2,154	8	345	416	2,923	1,745
	Q3	2,203	0	2,195	17	310	450	2,971	1,880
	Q4	1,796	0	1,674	12	252	332	2,270	1,713
2011	Q1	1,979	0	2,043	12	281	402	2,738	1,427
	Q2	2,245	0	2,165	25	306	448	2,943	1,791
	Q3	2,246	0	2,200	25	300	494	3,019	2,015
2010	Nov	687	0	662	4	..	..	..	591
	Dec	368	0	310	4	..	..	..	523
2011	Jan	521	0	570	4	..	..	..	367
	Feb	669	0	668	0	..	..	..	519
	Mar	789	0	805	8	..	..	..	541
	Apr	725	0	652	8	..	..	..	559
	May	737	0	744	8	..	..	..	633
	Jun	783	0	769	8	..	..	..	598
	Jul	789	0	727	8	..	..	..	658
	Aug	725	0	719	8	..	..	..	680
	Sep	732	0	754	8	..	..	..	676
	Oct	765	0	709	8	..	..	..	621
	Nov	720	0	722	8	..	..	..	615

**NB** Where the coverage is for Great Britain, the figures for imports & exports are defined accordingly and have been estimated.

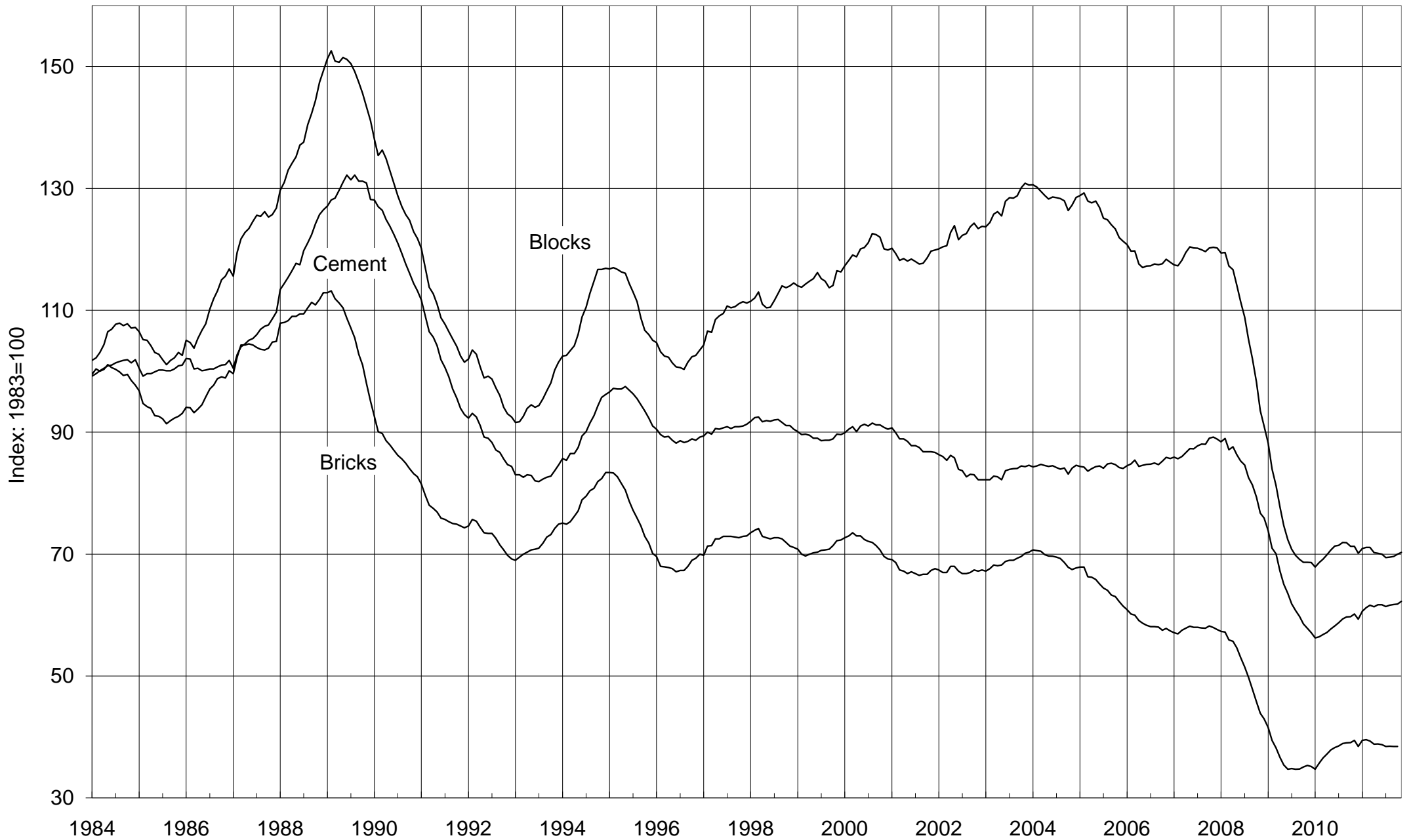
Cementitious material covers cement itself, fly as to EN 450 Part 1 where used as part of the cement in concrete (previously known as pulverised fuel ash (pfa) to BS 3892 Part 1) and ground granulated blast furnace slag (ggbs) to EN 15167 Part 1 (previously BS 6699)

\* Refers to stocks at end of period

\*\* Estimated

# Deliveries of Bricks, Blocks & Cement

12-month moving totals



The data is taken from tables 8, 9 and 11

## BRICKS

Table 9 : Bricks - Production, Deliveries and Stocks

Great Britain

	Production	Deliveries (from)	Stocks*	Production	Deliveries (from)	Stocks*
<b>(a) Brick Type</b>						
	All Types			Commons		
2006	2,510	2,399	906	304	284	137
2007	2,471	2,409	965	305	291	150
2008	1,929	1,796	1,105	246	242	151
2009 (R)	1,257	1,469	887	185	224	108
2010 (R)	1,430	1,606	702	182	194	94
2010 Q3 (R)	391	457	687	52	55	92
Q4 (R)	341	325	702	41	39	94
2011 Q1 (R)	372	397	674	45	44	95
Q2	429	439	665	46	50	91
Q3	394	444	615	43	50	84
2010 October (R)	143	141	688	17	17	92
November (R)	124	134	678	13	16	89
December (R)	73	49	702	10	6	94
2011 January (R)	98	108	696	13	13	94
February (R)	127	129	687	15	14	95
March	148	160	674	17	17	95
April	139	132	681	14	15	93
May	146	154	675	16	17	92
June	144	153	665	16	18	91
July	122	148	640	15	18	88
August	129	146	624	15	15	88
September	142	150	615	13	17	84
October	144	142	617	15	16	83
<b>(b) Material Type</b>						
	All Materials			Clay#		
2006	2,510	2,399	906	2,359	2,254	887
2007	2,471	2,409	965	2,312	2,249	947
2008	1,929	1,796	1,105	1,814	1,676	1,093
2009 (R)	1,257	1,469	887	..	..	..
2010 (R)	1,430	1,606	702	..	..	..
2010 Q3 (R)	391	457	687	..	..	..
Q4 (R)	341	325	702	..	..	..
2011 Q1 (R)	372	397	674	..	..	..
Q2	429	439	665	..	..	..
Q3	394	444	615	..	..	..
2010 October (R)	143	141	688	..	..	..
November (R)	124	134	678	..	..	..
December (R)	73	49	702	..	..	..
2011 January (R)	98	108	696	..	..	..
February (R)	127	129	687	..	..	..
March	148	160	674	..	..	..
April	139	132	681	..	..	..
May	146	154	675	..	..	..
June	144	153	665	..	..	..
July	122	148	640	..	..	..
August	129	146	624	..	..	..
September	142	150	615	..	..	..
October	144	142	617	..	..	..

\* Refers to stocks at end of period

#Sand-lime bricks are included with clay bricks

Millions

Production	Deliveries (from)	Stocks*	Production	Deliveries (from)	Stocks*	
						<b>(a) Brick Type</b>
Facings			Engineerings			
2,013	1,923	710	193	192	58	2006
1,950	1,906	753	216	212	62	2007
1,514	1,386	895	170	168	58	2008
973	1,135	732	99	109	48	2009 (R)
1,124	1,280	570	124	132	39	2010 (R)
308	366	560	32	37	34	2010 Q3 (R)
265	255	570	35	30	39	Q4 (R)
290	315	542	36	38	37	2011 Q1 (R)
340	346	538	43	43	36	Q2
312	352	498	39	42	33	Q3
114	112	563	12	12	34	2010 October (R)
98	106	555	13	12	35	November (R)
53	38	570	10	6	39	December (R)
73	85	562	11	10	40	2011 January (R)
100	103	553	12	12	40	February (R)
116	127	542	14	16	37	March
110	104	549	14	13	39	April
117	122	547	12	15	36	May
112	121	538	16	15	36	June
96	115	520	11	15	33	July
102	118	504	13	13	32	August
114	119	498	14	14	33	September
116	113	501	13	13	33	October
						<b>(b) Material Type</b>
Sand-Lime#			Concrete			
..	..	..	150	146	19	2006
..	..	..	159	160	18	2007
..	..	..	115	120	11	2008
..	..	..	..	..	..	2009 (R)
..	..	..	..	..	..	2010 (R)
..	..	..	..	..	..	2010 Q3 (R)
..	..	..	..	..	..	Q4 (R)
..	..	..	..	..	..	2011 Q1 (R)
..	..	..	..	..	..	Q2
..	..	..	..	..	..	Q3
..	..	..	..	..	..	2010 October (R)
..	..	..	..	..	..	November (R)
..	..	..	..	..	..	December (R)
..	..	..	..	..	..	2011 January (R)
..	..	..	..	..	..	February (R)
..	..	..	..	..	..	March
..	..	..	..	..	..	April
..	..	..	..	..	..	May
..	..	..	..	..	..	June
..	..	..	..	..	..	July
..	..	..	..	..	..	August
..	..	..	..	..	..	September
..	..	..	..	..	..	October

Note: Following the receipt of more accurate data from sites already sampled and additional data from new sites which were added to the sample panel from February 2011, data covering January 2009 to February 2011 have been revised (see Notes, page ii, for details on how to access the full set of revised data tables). Additionally, data for November 2011 will be published next month due to late returns.

## BRICKS

Table 10 : Brick Production, Deliveries and Stocks by English region, Wales and Scotland

	North East	Yorks & Humber	North West	West Midlands	East Midlands	East of England
				#		#
<b>(a) Commons</b>						
Production						
2010 (R)	..	..	..	..	44,092	..
2010 Q4 (R)	..	874	..	..	11,541	..
2011 Q1 (R)	..	..	2,135	..	13,206	..
Q2	..	640	2,803	2,110	12,651	..
Q3	..	788	..	..	10,091	..
2011 October	..	173	455	1,119	3,578	..
Deliveries (from)						
2010 (R)	..	4,245	9,300	..	40,250	..
2010 Q4 (R)	..	703	1,819	..	8,761	..
2011 Q1 (R)	..	1,010	2,105	..	11,259	..
Q2	..	866	2,398	4,066	10,944	..
Q3	..	1,106	2,776	3,063	12,589	..
2011 October	..	233	618	1,310	4,150	..
Stocks *						
2010 (R)	2,917	2,877	4,762	7,727	12,924	..
2010 Q4 (R)	2,917	2,877	4,762	7,727	12,924	..
2011 Q1 (R)	2,817	2,374	4,792	7,843	14,850	..
Q2	2,826	2,220	5,197	5,887	16,542	..
Q3	3,064	1,936	3,740	5,394	14,320	..
2011 October	2,891	1,876	3,577	5,203	13,748	..
<b>(b) Facings</b>						
Production						
2010 (R)	..	60,813	..	..	299,485	..
2010 Q4 (R)	..	15,115	13,602	68,989	74,759	..
2011 Q1 (R)	..	16,383	18,862	59,778	87,666	..
Q2	..	18,316	19,419	83,907	87,569	..
Q3	..	18,150	18,077	77,463	78,715	..
2011 October	..	6,650	7,904	31,417	23,862	..
Deliveries (from)						
2010 (R)	..	77,731	96,074	322,560	288,477	..
2010 Q4 (R)	..	13,294	19,671	63,559	59,374	..
2011 Q1 (R)	..	20,178	21,509	74,021	78,620	..
Q2	..	19,569	22,360	80,236	87,798	..
Q3	..	20,038	20,996	81,401	95,772	..
2011 October	..	5,523	6,007	25,659	31,509	..
Stocks *						
2010 (R)	35,831	23,467	43,519	106,961	166,978	..
2010 Q4 (R)	35,831	23,467	43,519	106,961	166,978	..
2011 Q1 (R)	31,397	19,672	40,872	90,832	176,024	..
Q2	..	19,205	37,931	94,503	..	..
Q3	..	17,337	35,012	90,565	..	..
2011 October	..	18,464	36,909	96,323	..	..
<b>(c) Engineering #</b>						
Production						
2010 (R)	..	..	..	83,511	..	..
2010 Q4 (R)	..	..	..	21,973	0	..
2011 Q1 (R)	..	..	..	23,475	..	..
Q2	..	..	..	26,750	..	..
Q3	..	..	..	23,378	..	..
2011 October	..	..	..	8,294	..	..
Deliveries (from)						
2010 (R)	..	..	..	84,523	..	..
2010 Q4 (R)	..	..	..	20,675	..	..
2011 Q1 (R)	..	..	5,417	23,992	..	..
Q2	..	..	6,347	26,623	..	..
Q3	..	..	6,013	25,510	..	..
2011 October	..	..	1,297	7,831	..	..
Stocks *						
2010 (R)	..	..	4,804	10,240	..	..
2010 Q4 (R)	..	..	4,804	10,240	..	..
2011 Q1 (R)	..	..	3,497	9,723	..	..
Q2	..	..	4,240	9,850	..	..
Q3	..	..	4,954	7,718	..	..
2011 October	..	..	5,095	8,151	..	..

Note : Regions now use Government Office boundaries

\* Refers to stocks at end of period.

South East	South West	England	Wales	Scotland	Great Britain	
#	#					
..	..	..	..	..	182,210	<b>(a) Commons</b>
..	..	..	..	..	40,946	Production
..	..	..	..	..	45,217	2010 (R)
..	..	..	..	..	46,233	2010 Q4 (R)
..	..	..	..	..	42,985	2011 Q1 (R)
..	..	..	..	..	15,407	Q2
..	..	..	..	..	..	Q3
..	..	..	..	..	..	2011 October
..	..	..	..	..	193,738	Deliveries (from)
..	..	..	..	..	39,172	2010 (R)
..	..	..	..	..	44,120	2010 Q4 (R)
..	..	..	..	..	50,152	2011 Q1 (R)
..	..	..	..	..	49,801	Q2
..	..	..	..	..	16,314	Q3
..	..	..	..	..	..	2011 October
..	..	..	2,231	..	93,768	Stocks *
..	..	..	2,231	..	93,768	2010 (R)
..	1,831	..	..	..	94,590	2010 Q4 (R)
..	1,735	..	..	..	90,588	2011 Q1 (R)
..	1,706	..	..	..	84,082	Q2
..	1,605	..	..	..	83,175	Q3
..	..	..	..	..	..	2011 October
..	..	..	..	..	..	<b>(b) Facings</b>
..	..	..	..	..	1,123,815	Production
43,157	..	..	..	5,421	264,870	2010 (R)
..	..	..	..	..	290,018	2010 Q4 (R)
62,893	..	..	..	4,957	339,630	2011 Q1 (R)
51,250	..	..	..	4,452	312,120	Q2
20,986	..	..	..	..	116,015	Q3
..	..	..	..	..	..	2011 October
225,248	..	..	..	..	1,279,763	Deliveries (from)
44,541	..	..	..	..	255,436	2010 (R)
55,721	..	..	..	3,830	315,087	2010 Q4 (R)
62,635	..	..	..	5,193	345,933	2011 Q1 (R)
65,099	..	..	..	4,300	352,226	Q2
22,082	..	..	..	1,670	112,874	Q3
..	..	..	..	..	..	2011 October
77,673	21,802	..	..	8,454	569,506	Stocks *
77,673	21,802	..	..	8,454	569,506	2010 (R)
..	19,569	..	..	7,552	542,042	2010 Q4 (R)
..	..	..	..	7,316	538,290	2011 Q1 (R)
58,641	..	..	..	7,468	498,143	Q2
57,545	..	..	..	..	501,284	Q3
..	..	..	..	..	..	2011 October
..	..	..	..	..	..	<b>(c) Engineering #</b>
..	..	..	..	..	123,580	Production
..	..	..	..	..	34,698	2010 (R)
..	..	..	..	..	36,475	2010 Q4 (R)
..	..	..	0	..	42,931	2011 Q1 (R)
..	..	..	..	..	38,592	Q2
..	..	..	..	0	12,744	Q3
..	..	..	..	..	..	2011 October
..	..	..	..	..	132,490	Deliveries (from)
..	..	..	..	..	30,345	2010 (R)
..	..	..	..	..	38,231	2010 Q4 (R)
..	..	..	..	..	43,379	2011 Q1 (R)
..	..	..	..	..	42,176	Q2
..	..	..	..	..	12,805	Q3
..	..	..	..	..	..	2011 October
..	..	..	..	..	38,799	Stocks *
..	..	..	..	..	38,799	2010 (R)
..	..	..	..	..	36,905	2010 Q4 (R)
..	..	..	..	..	36,457	2011 Q1 (R)
..	..	..	..	..	32,873	Q2
..	..	..	..	..	32,782	Q3
..	..	..	..	..	..	2011 October

Note: Following the receipt of more accurate data from sites already sampled and additional data from new sites which were added to the sample panel from February 2011, data covering January 2009 to February 2011 have been revised (see Notes, page ii, for details on how to access the full set of revisions). Additionally, data for November 2011 will be published next month due to late returns.

## BRICKS

Table 10 (cont'd) : Brick Production, Deliveries and Stocks by English region, Wales and Scotland

	North East	Yorks & Humber	North West	West Midlands	East Midlands	East of England
<b>(d) All Bricks</b>						
Production						
2009 (R)	..	..	..	..	..	..
2010 (R)	..	..	..	..	..	..
2010 Q3 (R)	..	..	..	..	93,837	..
Q4 (R)	..	..	..	..	86,300	..
2011 Q1 (R)	..	..	..	..	..	..
Q2	..	..	..	110,768	..	..
Q3	..	..	..	..	..	..
2010 October (R)	..	..	..	..	32,539	..
November (R)	..	7,961	..	..	35,687	..
December (R)	..	..	5,772	18,892	18,074	..
2011 January (R)	..	..	..	20,265	29,408	..
February (R)	..	..	8,160	31,053	..	..
March	..	..	..	..	38,393	..
April	..	..	..	35,901	..	..
May	..	..	..	39,761	..	..
June	..	..	..	35,106	33,657	..
July	..	..	..	29,968	..	..
August	..	..	..	..	31,179	..
September	..	..	..	39,033	..	..
October	..	..	..	40,559	..	..
Deliveries (from)						
2009 (R)	..	..	..	368,796	..	..
2010 (R)	..	..	..	..	..	..
2010 Q3 (R)	..	..	..	115,058	..	..
Q4 (R)	..	..	..	..	..	..
2011 Q1 (R)	..	..	29,031	..	..	..
Q2	..	..	31,105	109,390	..	..
Q3	..	..	29,785	108,643	..	..
2010 October (R)	..	..	..	..	..	..
November (R)	..	8,046	..	34,610	..	..
December (R)	..	1,998	4,188	..	..	..
2011 January (R)	..	..	9,004	25,449	..	..
February (R)	..	..	8,948	..	..	..
March	..	..	11,079	..	..	..
April	..	..	8,864	33,132	..	..
May	..	..	11,050	39,708	..	..
June	..	..	11,191	36,550	..	..
July	..	..	10,523	35,555	..	..
August	..	..	9,167	36,478	..	..
September	..	..	10,095	36,610	..	..
October	..	..	7,922	34,495	..	..
Stocks *						
2009 (R)	..	..	..	160,638	..	..
2010 (R)	..	..	53,085	124,662	..	..
2010 Q3 (R)	..	..	..	116,121	..	..
Q4 (R)	..	..	53,085	124,662	..	..
2011 Q1 (R)	..	..	49,161	108,102	..	..
Q2	..	..	47,368	109,480	..	..
Q3	..	..	43,706	102,855	..	..
2010 October (R)	..	..	..	119,777	..	..
November (R)	..	..	..	120,679	..	..
December (R)	..	..	53,085	124,662	..	..
2011 January (R)	..	..	..	123,914	..	..
February (R)	..	..	..	115,052	..	..
March	..	..	49,161	108,102	..	..
April	..	..	50,278	110,871	..	..
May	..	..	48,947	110,924	..	..
June	..	..	47,368	109,480	..	..
July	..	..	45,161	103,893	..	..
August	..	..	44,414	100,432	..	..
September	..	..	43,706	102,855	..	..
October	..	..	45,581	108,889	..	..

Note : Regions now use Government Office boundaries

\* Refers to stocks at end of period.

South East	South West	England	Wales	Scotland	Great Britain	
						<b>(d) All Bricks</b>
						Production
..	..	..	..	..	1,257,092	2009 (R)
..	..	..	..	..	1,429,605	2010 (R)
..	..	..	..	..	391,018	2010 Q3 (R)
..	..	..	..	..	340,514	Q4 (R)
..	..	..	..	..	371,710	2011 Q1 (R)
..	..	..	..	..	428,794	Q2
..	..	..	..	..	393,697	Q3
..	..	..	..	..	143,177	2010 October (R)
..	..	..	..	..	124,425	November (R)
..	..	..	..	..	72,912	December (R)
..	..	..	..	..	97,574	2011 January (R)
..	..	..	..	..	126,633	February (R)
..	..	..	..	..	147,503	March
..	..	..	..	..	138,961	April
..	..	..	..	..	145,912	May
..	..	..	..	..	143,921	June
..	..	..	..	..	122,429	July
..	..	..	..	..	129,415	August
..	..	..	..	..	141,853	September
..	..	..	..	..	144,166	October
						Deliveries (from)
..	..	..	..	..	1,468,545	2009 (R)
..	..	..	..	..	1,605,991	2010 (R)
..	..	..	..	..	457,131	2010 Q3 (R)
..	..	..	..	..	324,953	Q4 (R)
..	..	..	..	..	397,438	2011 Q1 (R)
..	..	..	..	..	439,464	Q2
..	..	..	..	..	444,203	Q3
..	..	..	..	..	141,438	2010 October (R)
..	..	..	..	..	134,208	November (R)
..	..	..	..	..	49,307	December (R)
..	..	..	..	..	108,100	2011 January (R)
..	..	..	..	..	128,984	February (R)
..	..	..	..	..	160,354	March
..	..	..	..	..	131,689	April
..	..	..	..	..	154,439	May
..	..	..	..	..	153,336	June
..	..	..	..	..	147,916	July
..	..	..	..	..	145,930	August
..	..	..	..	..	150,357	September
..	..	..	..	..	141,993	October
						Stocks *
..	..	..	..	..	887,482	2009 (R)
..	..	..	..	..	702,073	2010 (R)
..	..	..	..	..	686,804	2010 Q3 (R)
..	..	..	..	..	702,073	Q4 (R)
..	..	..	..	..	673,537	2011 Q1 (R)
..	..	..	..	..	665,335	Q2
..	..	..	..	..	615,098	Q3
..	..	..	..	..	688,491	2010 October (R)
..	..	..	..	..	678,480	November (R)
..	..	..	..	..	702,073	December (R)
..	..	..	..	..	695,962	2011 January (R)
..	..	..	..	..	687,289	February (R)
..	..	..	..	..	673,537	March
..	..	..	..	..	680,681	April
..	..	..	..	..	674,750	May
..	..	..	..	..	665,335	June
..	..	..	..	..	640,178	July
..	..	..	..	..	623,602	August
..	..	..	..	..	615,098	September
..	..	..	..	..	617,241	October

Note: Following the receipt of more accurate data from sites already sampled and additional data from new sites which were added to the sample panel from February 2011, data covering January 2009 to February 2011 have been revised (see Notes, page ii, for details on how to access the full set of revisions). Additionally, data for November 2011 will be published next month due to late returns.

# CONCRETE PRODUCTS

## Table 11 : Concrete Blocks - Production, Deliveries and Stocks

Great Britain

	All Types			Dense		
	Production	Deliveries (from)	Stocks*	Production	Deliveries (from)	Stocks*
2000	90,219	88,529	9,594	37,629	37,013	4,368
2001	87,922	88,509	8,842	36,598	36,518	4,258
2002	91,474	91,342	9,014	35,744	36,019	3,963
2003	95,675	96,383	8,513	36,775	37,175	3,684
2004	96,256	94,854	10,088	37,677	37,444	3,690
2005	89,997	89,551	9,680	36,188	36,473	3,465
2006	87,510	87,015	..	34,956	34,741	..
2007	89,951	88,746	..	36,686	35,396	..
2008	67,743	67,136	8,920	29,675	29,889	3,498
2009	50,394	50,639	8,320	22,607	22,748	3,291
2010	53,629	51,758	10,152	22,393	21,731	3,833
2006 Q3	22,615	23,611	..	9,384	9,599	..
Q4	21,305	20,023	..	8,133	8,079	..
2007 Q1	22,014	21,057	..	8,714	8,141	..
Q2	22,532	24,033	..	9,268	9,531	..
Q3	23,248	23,184	..	9,727	9,283	..
Q4	22,157	20,472	..	8,978	8,442	..
2008 Q1	21,131	18,855	11,749	8,564	7,853	5,075
Q2	20,231	19,714	11,977	8,767	8,677	5,107
Q3	14,894	16,309	10,224	7,131	7,576	4,479
Q4	11,487	12,259	8,920	5,214	5,783	3,498
2009 Q1	12,094	11,649	9,161	5,635	5,438	3,628
Q2	13,463	13,191	9,455	6,192	6,032	3,821
Q3	12,771	13,924	8,203	5,811	6,255	3,390
Q4	12,066	11,874	8,320	4,969	5,023	3,291
2010 Q1	12,614	12,072	8,740	5,033	4,896	3,333
Q2	14,956	14,753	8,990	6,343	6,176	3,513
Q3	15,172	14,343	9,832	6,477	6,125	3,837
Q4	10,887	10,590	10,152	4,541	4,534	3,833
2011 Q1	13,982	12,795	11,516	5,642	5,278	4,197
Q2	14,761	13,911	12,510	6,217	5,871	4,647
Q3	14,208	14,076	12,352	6,217	5,931	4,862
2009 November	4,372	4,072	..	1,782	1,720	..
December	2,954	2,984	8,320	1,258	1,297	3,291
2010 January	3,342	3,003	..	1,225	1,186	..
February	4,341	4,100	..	1,744	1,672	..
March	4,931	4,969	8,740	2,063	2,039	3,333
April	4,814	4,948	..	1,975	1,970	..
May	4,790	4,765	..	1,974	1,969	..
June	5,353	5,040	8,990	2,394	2,237	3,513
July	5,266	4,970	..	2,248	2,169	..
August	4,711	4,614	..	2,158	1,962	..
September	5,195	4,759	9,832	2,070	1,993	3,837
October	4,295	4,372	..	1,739	1,824	..
November	3,999	4,092	..	1,595	1,710	..
December	2,593	2,126	10,152	1,207	1,001	3,833
2011 January	3,924	3,591	..	1,657	1,539	..
February	4,664	4,220	..	1,853	1,694	..
March	5,394	4,984	11,516	2,133	2,045	4,197
April	4,415	4,308	..	1,867	1,811	..
May	5,037	4,690	..	2,119	2,019	..
June	5,309	4,912	12,510	2,231	2,041	4,647
July	4,805	4,574	..	2,088	1,935	..
August	4,413	4,675	..	2,073	1,987	..
September	4,990	4,826	12,352	2,056	2,009	4,862
October (P)	4,422	4,639	..	1,860	1,936	..
November (P)	4,188	4,321	..	1,723	1,866	..

\* Refers to stocks at end of period

# CONCRETE PRODUCTS

Thousand square metres

Lightweight			Aerated			
Production	Deliveries (from)	Stocks*	Production	Deliveries (from)	Stocks*	
22,991	22,638	2,169	29,599	28,878	3,058	2000
22,684	22,670	2,207	28,639	29,320	2,377	2001
23,478	23,537	2,188	32,252	31,786	2,863	2002
24,991	25,161	2,107	33,909	34,047	2,721	2003
25,462	25,736	2,271	33,117	31,674	4,127	2004
25,561	25,673	2,173	28,248	27,405	4,042	2005
25,345	25,222	..	27,209	27,051	..	2006
25,965	25,667	..	27,300	27,682	..	2007
18,168	18,363	2,149	19,900	18,884	3,273	2008
13,421	13,989	1,522	14,367	13,903	3,507	2009
14,415	13,923	2,044	16,822	16,104	4,276	2010
6,699	6,781	..	6,532	7,231	..	2006 Q3
6,258	5,920	..	6,914	6,024	..	Q4
6,418	6,437	..	6,883	6,479	..	2007 Q1
6,572	6,867	..	6,692	7,636	..	Q2
6,757	6,616	..	6,764	7,286	..	Q3
6,217	5,748	..	6,962	6,282	..	Q4
5,580	5,389	2,633	6,988	5,612	4,041	2008 Q1
5,421	5,405	2,549	6,043	5,632	4,321	Q2
4,110	4,309	2,338	3,653	4,424	3,406	Q3
3,057	3,260	2,149	3,216	3,216	3,273	Q4
3,213	3,258	2,181	3,247	2,953	3,352	2009 Q1
3,498	3,553	2,125	3,773	3,607	3,510	Q2
3,293	3,765	1,544	3,667	3,903	3,269	Q3
3,416	3,412	1,522	3,681	3,439	3,507	Q4
3,344	3,252	1,601	4,238	3,924	3,806	2010 Q1
4,031	3,950	1,692	4,582	4,627	3,785	Q2
4,208	3,899	2,023	4,487	4,319	3,971	Q3
2,832	2,822	2,044	3,515	3,234	4,276	Q4
3,916	3,665	2,301	4,423	3,852	5,017	2011 Q1
4,008	3,827	2,507	4,537	4,212	5,357	Q2
3,908	3,970	2,218	4,083	4,175	5,272	Q3
1,300	1,173	..	1,290	1,178	..	2009 November
737	828	1,522	959	859	3,507	December
712	760	..	1,406	1,057	..	2010 January
1,302	1,134	..	1,294	1,294	..	February
1,330	1,357	1,601	1,538	1,573	3,806	March
1,298	1,288	..	1,541	1,689	..	April
1,305	1,264	..	1,511	1,532	..	May
1,428	1,398	1,692	1,530	1,405	3,785	June
1,474	1,354	..	1,543	1,447	..	July
1,286	1,289	..	1,267	1,363	..	August
1,447	1,256	2,023	1,677	1,510	3,971	September
1,211	1,201	..	1,345	1,347	..	October
1,068	1,122	..	1,336	1,260	..	November
553	498	2,044	834	627	4,276	December
939	1,021	..	1,328	1,031	..	2011 January
1,346	1,196	..	1,466	1,330	..	February
1,632	1,448	2,301	1,629	1,491	5,017	March
1,188	1,201	..	1,361	1,296	..	April
1,401	1,316	..	1,517	1,355	..	May
1,420	1,311	2,507	1,658	1,561	5,357	June
1,335	1,291	..	1,383	1,348	..	July
1,306	1,327	..	1,034	1,361	..	August
1,267	1,352	2,218	1,666	1,466	5,272	September
1,170	1,277	..	1,392	1,427	..	October (P)
1,233	1,272	..	1,232	1,182	..	November (P)

# CONCRETE PRODUCTS

## Table 12 : Concrete Blocks : Production, Deliveries and Stocks by English Region, Wales and Scotland

	North East	Yorks & Humber	North West	West Midlands	East Midlands	East of England
<b>(a) Dense aggregate</b>						
Production						
2010	418	..	2,778	..	..	..
2010 Q3	155	..	826	..	..	..
Q4	81	..	553	..	..	..
2011 Q1	111	..	701	..	..	..
Q2	115	..	699	..	..	..
Q3	..	..	723	..	..	..
Deliveries (from)						
2010	397	..	2,799	..	..	..
2010 Q3	135	..	831	..	..	..
Q4	73	..	575	..	..	..
2011 Q1	105	..	665	..	..	..
Q2	117	..	707	..	..	..
Q3	109	..	706	..	..	..
Stocks *						
2010	85	332	265	..	..	..
2010 Q3	76	372	287	..	..	..
Q4	85	332	265	..	..	..
2011 Q1	91	382	301	..	..	..
Q2	89	378	270	..	..	..
Q3	78	346	286	..	..	..
<b>(b) Other (1)</b>						
Production						
2010	1,188	..	2,016	..	..	..
2010 Q3	333	..	591	..	..	..
Q4	225	..	432	..	..	..
2011 Q1	353	..	533	..	..	..
Q2	319	..	562	..	..	..
Q3	..	..	531	..	..	..
Deliveries (from)						
2010	1,202	..	2,060	..	..	..
2010 Q3	363	..	596	..	..	..
Q4	227	..	426	..	..	..
2011 Q1	327	..	532	..	..	..
Q2	302	..	554	..	..	..
Q3	300	..	566	..	..	..
Stocks *						
2010	120	1,099	164	..	..	..
2010 Q3	123	1,128	158	..	..	..
Q4	120	1,099	164	..	..	..
2011 Q1	148	1,264	165	..	..	..
Q2	165	1,388	153	..	..	..
Q3	105	1,441	118	..	..	..
<b>(c) Total</b>						
Production						
2010	1,607	10,353	4,794	3,534	6,301	6,048
2010 Q3	487	3,055	1,417	1,014	1,734	1,646
Q4	306	1,968	985	728	1,210	1,150
2011 Q1	463	2,637	1,234	1,024	1,598	1,646
Q2	434	2,841	1,261	982	1,680	1,475
Q3	338	2,755	1,254	975	1,564	1,436
Deliveries (from)						
2010	1,598	10,166	4,860	3,736	5,974	6,144
2010 Q3	499	2,873	1,426	1,064	1,631	1,644
Q4	300	2,037	1,001	747	1,186	1,216
2011 Q1	432	2,568	1,197	916	1,489	1,521
Q2	419	2,721	1,261	995	1,661	1,578
Q3	409	2,706	1,272	1,082	1,600	1,473
Stocks *						
2010	205	1,431	430	677	1,092	582
2010 Q3	199	1,499	445	696	1,068	623
Q4	205	1,431	430	677	1,092	582
2011 Q1	239	1,646	466	785	1,201	730
Q2	254	1,766	423	772	1,220	643
Q3	183	1,787	405	665	1,112	632

Note : Regions refer to Government Office Regions

\* Refers to stocks at end of period.

# CONCRETE PRODUCTS

Thousand square metres

South East	South West	England	Wales	Scotland	Great Britain	
						<b>(a) Dense aggregate</b>
						Production
..	5,813	..	2,918	..	22,387	2010
409	1,699	..	783	..	6,477	2010 Q3
..	1,221	..	709	..	4,541	Q4
..	1,574	..	750	..	5,642	2011 Q1
..	1,694	..	896	..	6,217	Q2
..	1,609	..	956	..	6,217	Q3
						Deliveries (from)
..	5,548	..	2,667	..	21,731	2010
406	1,556	4,924	711	489	6,125	2010 Q3
..	1,215	..	568	..	4,534	Q4
..	1,415	..	681	..	5,278	2011 Q1
..	1,599	..	741	..	5,871	Q2
..	1,522	..	848	..	5,931	Q3
						Stocks *
..	1,100	..	..	211	3,833	2010
..	1,105	2,887	629	321	3,837	2010 Q3
..	1,100	..	..	211	3,833	Q4
..	1,260	..	..	233	4,197	2011 Q1
..	1,482	..	..	266	4,647	Q2
137	1,549	..	..	336	4,862	Q3
						<b>(b) Other (1)</b>
						Production
..	992	..	567	..	31,242	2010
1,940	299	..	177	..	8,695	2010 Q3
..	197	..	178	..	6,347	Q4
..	327	..	161	..	8,339	2011 Q1
..	380	..	251	..	8,544	Q2
..	392	..	128	..	7,991	Q3
						Deliveries (from)
..	994	..	374	..	30,028	2010
1,633	276	8,083	117	20	8,219	2010 Q3
..	204	..	87	..	6,056	Q4
..	295	..	89	..	7,517	2011 Q1
..	375	..	78	..	8,040	Q2
..	365	..	124	..	8,145	Q3
						Stocks *
..	138	..	..	33	6,320	2010
..	134	5,801	158	35	5,994	2010 Q3
..	138	..	..	33	6,320	Q4
..	175	..	..	26	7,318	2011 Q1
..	225	..	..	31	7,863	Q2
3,642	228	..	..	30	7,490	Q3
						<b>(c) Total</b>
						Production
8,959	6,805	48,402	3,485	1,742	53,629	2010
2,349	1,998	13,699	960	512	15,172	2010 Q3
1,991	1,418	9,756	887	244	10,887	Q4
2,219	1,902	12,724	911	347	13,982	2011 Q1
2,474	2,075	13,221	1,147	392	14,761	Q2
2,372	2,001	12,696	1,085	427	14,208	Q3
						Deliveries (from)
7,864	6,543	46,884	3,040	1,834	51,759	2010
2,039	1,832	13,007	828	509	14,343	2010 Q3
1,675	1,419	9,579	656	355	10,590	Q4
1,860	1,710	11,693	770	332	12,795	2011 Q1
2,128	1,974	12,738	819	354	13,911	Q2
2,315	1,887	12,745	971	360	14,076	Q3
						Stocks *
3,235	1,238	8,890	1,019	244	10,152	2010
2,919	1,239	8,689	788	355	9,832	2010 Q3
3,235	1,238	8,890	1,019	244	10,152	Q4
3,594	1,434	10,097	1,160	259	11,516	2011 Q1
3,940	1,707	10,725	1,488	297	12,510	Q2
3,779	1,777	10,339	1,646	367	12,352	Q3

(1) Lightweight aggregate including aerated concrete blocks where appropriate.

# OTHER BUILDING MATERIALS

## Table 13 : Other Building Materials

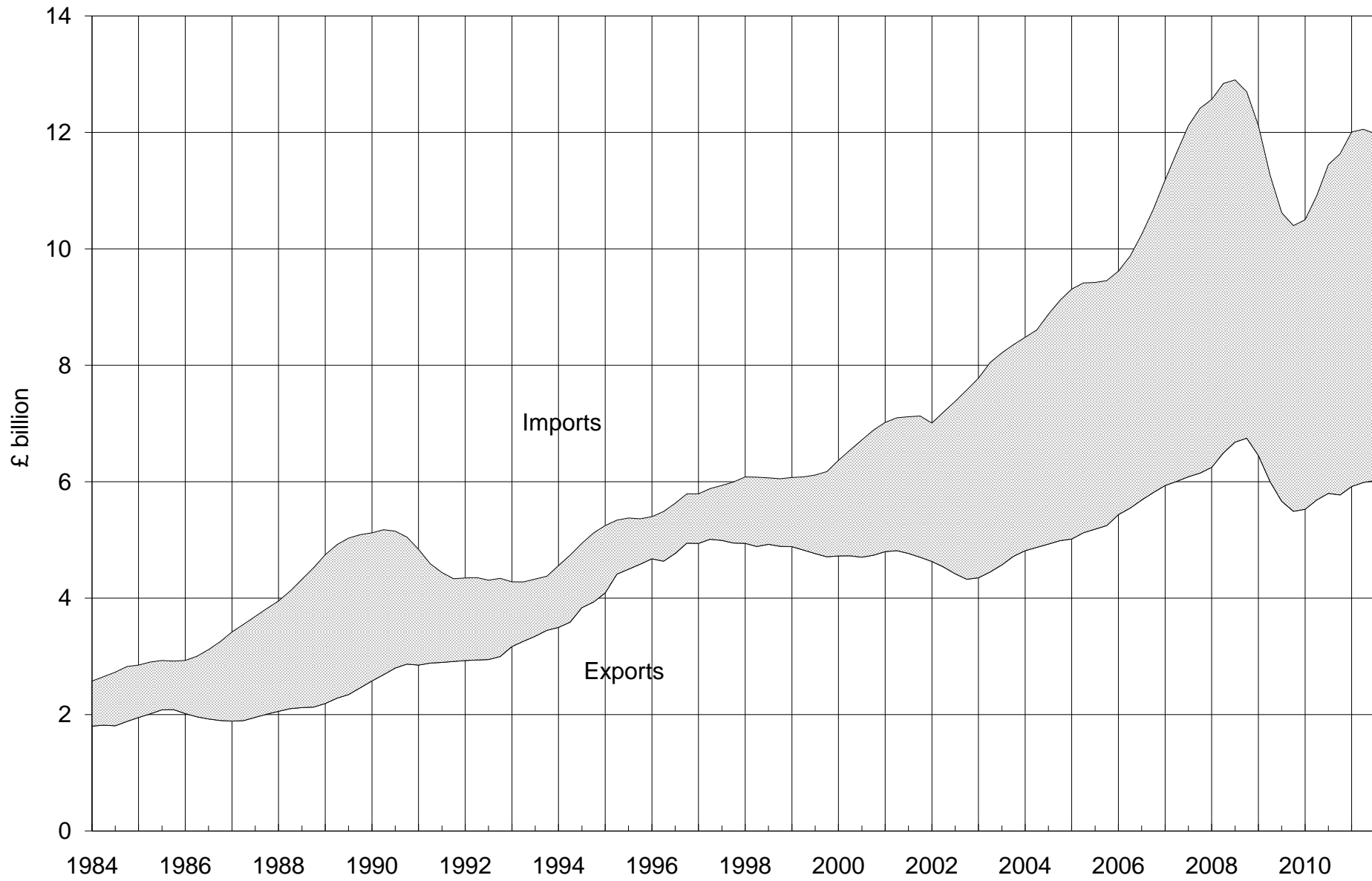
		Great Britain			United Kingdom
		Concrete Roofing Tiles (Th.sq.m. of roof area covered)			Ready-Mixed Concrete # (Th.cu.m.)
		Production	Deliveries	Stocks *	Deliveries
2000		26,765	25,047	4,552	23,043
2001		24,825	24,430	4,947	23,008
2002		25,023	24,390	4,586	22,597
2003		21,437	21,401	2,982	22,289
2004		20,739	19,403	2,850	22,856
2005		25,719	24,489	4,902	22,432
2006		23,730	24,118	4,426	23,029
2007		23,551	23,812	3,646	23,548
2008		20,084	19,926	3,899	20,051
2009		14,079	15,612	2,344	14,069
2010		17,817	17,146	3,023	14,038
2002	Q3	5,918	6,848	3,654	5,929
	Q4	6,251	5,267	4,586	5,330
2003	Q1	5,821	5,798	4,484	5,388
	Q2	6,280	6,364	4,480	5,892
	Q3	3,917	4,455	2,362	5,750
	Q4	5,418	4,785	2,982	5,259
2004	Q1	5,498	4,294	3,787	5,334
	Q2	5,266	4,800	3,728	5,931
	Q3	4,920	5,134	3,048	6,038
	Q4	5,055	5,175	2,850	5,553
2005	Q1	5,787	4,779	3,732	5,137
	Q2	7,502	6,406	5,818	5,994
	Q3	6,135	7,103	4,850	5,920
	Q4	6,295	6,200	4,902	5,381
2006	Q1	6,792	6,252	5,418	5,445
	Q2	6,002	5,709	5,708	5,995
	Q3	5,448	6,371	4,688	6,047
	Q4	5,489	5,787	4,426	5,542
2007	Q1	6,618	5,629	5,368	5,554
	Q2	5,775	5,728	5,360	6,103
	Q3	5,129	6,541	3,929	6,205
	Q4	6,028	5,914	3,646	5,686
2008	Q1	5,708	5,421	3,922	5,193
	Q2	5,815	5,679	4,488	5,773
	Q3	4,657	4,977	3,840	4,902
	Q4	3,903	3,849	3,899	4,183
2009	Q1	3,664	3,281	4,273	3,583
	Q2	3,055	3,936	3,391	3,637
	Q3	3,580	4,447	2,522	3,628
	Q4	3,779	3,949	2,344	3,221
2010	Q1	4,129	3,505	2,967	3,328
	Q2	4,961	4,922	3,008	3,819
	Q3	4,783	4,824	2,967	3,831
	Q4	3,945	3,894	3,023	3,060
2011	Q1	4,820	4,079	3,858	3,827
	Q2	4,565	4,398	4,022	3,907
	Q3	4,210	4,901	3,316	3,908

\* Refers to stocks at the end of the period.

# The Mineral Products Association (who provide these figures), estimate that these figures understate UK deliveries by 14-18%

# Comparison of Imports & Exports

4-quarter moving totals



The data is taken from Table 14

# EXTERNAL TRADE

**Table 14 : Value of Overseas Trade in Selected Materials and Components  
for Constructional Use : Imports (cif) & Exports (fob)**

United Kingdom		Current Prices (£'000)					
		2005	2006	2007	2008	2009	2010
<b>All Building Materials &amp; Components</b>	Imports	9,453,474	10,680,836	12,415,890	12,697,046	10,399,489	11,632,361
	Exports	5,246,749	5,813,301	6,147,721	6,747,415	5,491,055	5,772,232
	Balance	(4,206,725)	(4,867,535)	(6,268,169)	(5,949,631)	(4,908,434)	(5,860,129)
<b>All Raw Materials</b>	Imports	149,138	180,137	213,589	228,019	158,706	174,275
	Exports	91,178	98,057	124,957	116,930	135,125	132,349
	Balance	(57,960)	(82,080)	(88,632)	(111,089)	(23,581)	(41,926)
Sand for construction	Imports	4,363	5,075	6,455	6,369	5,916	5,259
	Exports	5,498	5,770	7,769	9,373	7,967	7,398
Crushed Rock : uncoated	Imports	28,580	39,308	38,882	43,442	32,030	36,490
	Exports	60,850	65,985	71,990	77,930	76,898	73,902
Crushed Rock : coated	Imports	1,172	2,245	2,927	3,206	2,227	2,642
	Exports	4,787	2,621	3,937	3,862	3,061	2,988
Building Stone : unprocessed	Imports	92,059	95,903	115,064	124,436	93,174	99,236
	Exports	1,597	1,777	3,209	2,159	2,114	4,053
Slate : unprocessed	Imports	7,428	10,894	11,590	9,295	6,168	5,799
	Exports	703	309	1,579	813	1,924	844
Gypsum & Anhydrite	Imports	9,509	8,649	8,626	8,301	8,353	7,040
	Exports	547	511	493	899	768	1,148
Bituminous Shale	Imports	6,027	18,063	30,045	32,970	10,838	17,809
	Exports	17,196	21,084	35,980	21,894	42,393	42,016
<b>All Semi-Manufactures</b>	Imports	1,619,893	1,756,076	2,196,078	1,972,139	1,389,572	1,639,598
	Exports	575,831	618,573	644,415	648,822	426,190	480,686
	Balance	(1,044,062)	(1,137,503)	(1,551,663)	(1,323,317)	(963,382)	(1,158,912)
Clinker	Imports	26,338	40,922	60,554	35,973	18,520	17,331
	Exports	1,801	2,644	1,899	1,271	835	1,205
Sawn Wood > 6mm thick	Imports	691,359	727,916	915,900	610,292	554,187	705,638
	Exports	30,939	38,370	32,010	20,957	16,025	19,437
Densified Wood	Imports	2,603	2,782	2,332	1,767	1,452	2,301
	Exports	475	422	319	272	268	518
Particle Board	Imports	58,319	56,174	55,934	45,497	27,913	30,755
	Exports	11,058	16,357	9,377	8,920	8,382	8,875
Laminated Wood	Imports	232,912	250,615	282,912	296,969	215,021	146,691
	Exports	22,721	24,436	23,172	21,935	15,839	11,698
Fibreboard	Imports	58,050	61,429	72,499	61,614	56,511	53,901
	Exports	10,398	12,532	10,575	8,966	15,055	24,727
Steel for Fabrication	Imports	248,987	278,232	463,477	529,327	184,164	286,866
	Exports	270,581	236,427	257,126	301,366	185,537	216,815
Aluminium for Fabrication	Imports	211,703	272,983	277,251	315,948	268,155	325,157
	Exports	152,508	220,651	234,348	216,596	123,494	131,665
Profiles of Vinyl Chloride	Imports	48,666	48,747	41,560	44,169	44,827	35,911
	Exports	24,012	27,349	33,766	25,781	23,770	23,337
Slag for Construction	Imports	4,790	4,626	8,607	11,580	2,331	5,825
	Exports	2,788	1,747	1,231	1,018	921	1,112
Tar & Bituminous Mixtures	Imports	34,134	9,261	12,285	17,424	15,156	27,742
	Exports	37,635	26,008	27,895	27,680	22,781	27,613
Lime	Imports	2,032	2,389	2,767	1,579	1,335	1,480
	Exports	10,915	11,630	12,697	14,060	13,283	13,684

## EXTERNAL TRADE

Current Prices (£'000)

2010 Q3	Q4	2011 Q1	Q2	Q3		
3,143,720	2,843,270	3,019,336 (R)	3,046,999 (R)	3,070,329	Imports	<b>All Building Materials &amp; Components</b>
1,503,884	1,408,706	1,491,355 (R)	1,582,758 (R)	1,537,268	Exports	
(1,639,836)	(1,434,564)	(1,527,981) (R)	(1,464,241) (R)	(1,533,061)	Balance	
45,939	40,312	36,079 (R)	64,025 (R)	48,664	Imports	<b>All Raw Materials</b>
39,127	34,715	23,881 (R)	45,792 (R)	44,584	Exports	
(6,812)	(5,597)	(12,198) (R)	(18,233) (R)	(4,080)	Balance	
1,609	1,288	1,534	2,321	2,077	Imports	Sand for construction
1,799	1,886	1,683	2,081 (R)	2,100	Exports	
8,449	9,466	9,060	9,372 (R)	7,148	Imports	Crushed Rock : uncoated
18,305	18,698	18,257	24,446 (R)	20,603	Exports	
771	772	587	859	795	Imports	Crushed Rock : coated
736	332	483	1,404	1,529	Exports	
26,517	22,600	21,577 (R)	33,896 (R)	27,524	Imports	Building Stone : unprocessed
1,163	968	916 (R)	1,398 (R)	814	Exports	
1,256	1,223	874	1,463 (R)	1,394	Imports	Slate : unprocessed
285	282	221	247	167	Exports	
2,059	1,632	2,221	2,163	1,112	Imports	Gypsum & Anhydrite
362	325	293	214	260	Exports	
5,278	3,331	226	13,951	8,614	Imports	Bituminous Shale
16,477	12,224	2,028	16,002 (R)	19,111	Exports	
443,409	393,812	399,595 (R)	469,319 (R)	425,559	Imports	<b>All Semi-Manufactures</b>
127,176	111,250	131,469 (R)	131,697 (R)	117,224	Exports	
(316,233)	(282,562)	(268,126) (R)	(337,622) (R)	(308,335)	Balance	
4,783	4,568	4,324	4,550	5,645	Imports	Clinker
241	608	360	320	1,916	Exports	
201,383	158,068	148,662 (R)	184,069 (R)	153,334	Imports	Sawn Wood > 6mm thick
4,667	3,947	3,565	4,570	3,784	Exports	
664	459	570 (R)	480 (R)	458	Imports	Densified Wood
149	150	150	137	163	Exports	
8,290	6,842	7,148	7,575 (R)	11,514	Imports	Particle Board
1,833	1,923	1,980	2,015	1,863	Exports	
41,859	30,118	36,225 (R)	36,540 (R)	33,389	Imports	Laminated Wood
3,651	2,175	3,512 (R)	2,215 (R)	2,960	Exports	
14,066	12,406	14,362 (R)	14,366 (R)	15,718	Imports	Fibreboard
6,803	6,841	3,142 (R)	2,413 (R)	2,806	Exports	
70,464	86,437	86,421 (R)	99,249 (R)	85,128	Imports	Steel for Fabrication
57,404	48,665	62,365 (R)	55,401 (R)	43,975	Exports	
84,490	81,067	90,905 (R)	107,715 (R)	103,768	Imports	Aluminium for Fabrication
34,337	32,085	41,719 (R)	46,523 (R)	39,227	Exports	
9,416	8,003	6,205	5,975 (R)	7,125	Imports	Profiles of Vinyl Chloride
6,105	5,316	5,328	7,448 (R)	5,937	Exports	
862	938	324	742	424	Imports	Slag for Construction
318	243	243	468	351	Exports	
6,831	4,650	4,070	7,686	8,480	Imports	Tar & Bituminous Mixtures
8,227	6,146	4,962	6,239 (R)	9,049	Exports	
301	256	379	372	576	Imports	Lime
3,441	3,151	4,143	3,948 (R)	5,193	Exports	

# EXTERNAL TRADE

**Table 14 : Value of Overseas Trade in Selected Materials and Components for Constructional Use : Imports (cif) & Exports (fob)**

United Kingdom		Current Prices (£'000)					
		2005	2006	2007	2008	2009	2010
<b>All Products &amp; Components</b>	Imports	7,684,443	8,744,623	10,006,223	10,496,888	8,851,211	9,818,488
	Exports	4,579,740	5,096,671	5,378,349	5,981,663	4,929,740	5,159,197
	Balance	(3,104,703)	(3,647,952)	(4,627,874)	(4,515,225)	(3,921,471)	(4,659,291)
Wood sleepers (rail & tram)	Imports	7,296	6,844	7,907	10,736	5,761	5,065
	Exports	905	605	905	1,074	688	717
Building Stone : processed	Imports	173,780	206,066	243,019	252,176	211,999	217,570
	Exports	39,290	36,148	34,465	38,557	37,466	30,751
Slate Roofing Tiles*	Imports	53,197	50,718	58,165	65,872	57,067	63,188
	Exports	11,093	5,479	6,941	6,559	8,552	6,286
Other Slate Products*	Imports	10,235	10,641	8,963	8,204	8,002	8,381
	Exports	2,569	2,406	2,348	1,643	1,141	1,725
Slate Products*	Imports	..	..	..	..	..	..
	Exports	..	..	..	..	..	..
Portland Cement	Imports	56,472	52,408	59,422	65,930	54,475	52,246
	Exports	21,706	28,179	26,525	13,271	4,897	4,178
Other Cements	Imports	22,408	24,858	24,705	31,452	47,618	50,669
	Exports	23,786	32,357	31,336	29,824	24,202	35,097
Steel Sheet Piling	Imports	47,933	55,911	71,747	78,763	48,577	61,527
	Exports	14,808	18,609	20,205	32,009	24,175	16,226
Ready-Mixed Concrete	Imports	3	612	686	826	711	822
	Exports	9,072	10,116	10,378	12,639	4,600	3,378
Concrete Reinforcing Bars	Imports	121,965	150,492	181,795	210,556	72,138	86,842
	Exports	38,095	38,587	107,236	194,136	68,087	60,252
Mortars	Imports	4,740	5,247	6,225	7,021	7,949	7,357
	Exports	5,566	5,998	5,772	6,410	5,360	3,757
Clay Bricks	Imports	27,578	29,102	35,245	25,877	18,675	19,778
	Exports	12,082	13,540	10,591	7,133	3,703	3,162
Clay Roofing Tiles	Imports	9,485	10,285	10,348	10,104	7,576	9,116
	Exports	1,449	1,680	303	276	511	589
Clay Pipes	Imports	2,163	600	669	313	146	225
	Exports	8,445	6,262	5,518	5,775	4,177	3,472
Other Clay Products	Imports	5,240	5,885	5,602	6,668	5,453	5,225
	Exports	14,338	11,123	17,502	18,852	2,851	3,188
Concrete Blocks & Bricks	Imports	5,867	4,544	11,475	8,615	4,421	4,369
	Exports	25,598	26,813	27,318	21,102	11,844	9,203
Concrete Roofing Tiles*	Imports	2,408	4,845	4,664	7,195	7,342	5,017
	Exports	7,286	7,857	7,013	3,844	2,402	2,949
Other Concrete Tiles & Paving*	Imports	11,752	14,703	16,130	18,353	15,576	13,297
	Exports	35,168	33,692	38,280	34,756	19,151	13,594
Concrete Tiles and Pavings*	Imports	..	..	..	..	..	..
	Exports	..	..	..	..	..	..
Prefabricated Concrete Products	Imports	20,288	22,439	26,763	34,841	23,582	28,811
	Exports	29,373	28,936	23,240	19,042	8,967	12,390
Concrete Pipes	Imports	21,365	27,303	32,767	36,740	40,646	45,485
	Exports	25,566	27,010	32,536	31,413	30,366	24,339

Current Prices (£'000)

2010 Q3	Q4	2011 Q1	Q2	Q3		
2,654,372	2,409,146	2,583,662 (R)	2,513,655 (R)	2,596,106	Imports	<b>All Products &amp; Components</b>
1,337,581	1,262,741	1,336,005 (R)	1,405,269 (R)	1,375,460	Exports	
(1,316,791)	(1,146,405)	(1,247,657) (R)	(1,108,386) (R)	(1,220,646)	Balance	
1,208	850	1,614	1,935	1,933	Imports	Wood sleepers (rail & tram)
215	108	106	382	130	Exports	
56,242	51,851	46,565 (R)	44,930 (R)	42,502	Imports	Building Stone : processed
7,402	6,570	2,342	3,300	2,694	Exports	
18,812	16,682	..	..	..	Imports	Slate Roofing Tiles*
1,530	1,766	..	..	..	Exports	
2,030	1,886	..	..	..	Imports	Other Slate Products*
347	693	..	..	..	Exports	
..	..	16,918	18,839 (R)	18,968	Imports	Slate Products*
..	..	1,630 (R)	1,911 (R)	2,042	Exports	
15,891	9,397	11,503	12,829 (R)	12,261	Imports	Portland Cement
1,133	1,062	656	2,180 (R)	1,382	Exports	
13,702	15,437	14,289 (R)	16,683 (R)	14,871	Imports	Other Cements
9,776	7,587	9,937	9,123	10,585	Exports	
19,792	15,987	19,002	19,326 (R)	9,312	Imports	Steel Sheet Piling
2,607	3,408	4,837	3,161 (R)	6,990	Exports	
203	84	11	17	1	Imports	Ready-Mixed Concrete
922	863	664	646	1,124	Exports	
25,348	13,534	33,518	35,449 (R)	30,744	Imports	Concrete Reinforcing Bars
17,332	12,080	8,521	15,667	14,382	Exports	
1,905	1,371	2,335	2,109 (R)	2,337	Imports	Mortars
981	670	1,834	2,101 (R)	3,131	Exports	
4,928	3,927	5,445	5,731 (R)	6,001	Imports	Clay Bricks
887	520	624	737	750	Exports	
2,567	2,329	2,162	2,314 (R)	2,292	Imports	Clay Roofing Tiles
33	98	76	29	69	Exports	
65	12	82	61	90	Imports	Clay Pipes
1,021	876	917	1,193	1,106	Exports	
1,492	1,221	1,814 (R)	1,705 (R)	1,270	Imports	Other Clay Products
594	768	1,588	820	478	Exports	
1,149	967	1,712	1,777 (R)	2,276	Imports	Concrete Blocks & Bricks
2,775	1,511	1,857	3,020	2,300	Exports	
1,527	1,196	..	..	..	Imports	Concrete Roofing Tiles*
890	752	..	..	..	Exports	
3,017	3,552	..	..	..	Imports	Other Concrete Tiles & Paving*
4,320	2,194	..	..	..	Exports	
..	..	4,606	5,016 (R)	4,309	Imports	Concrete Tiles and Pavings*
..	..	4,606 (R)	4,245 (R)	3,886	Exports	
9,080	5,927	6,482	6,254	2,834	Imports	Prefabricated Concrete Products
3,219	2,166	2,150	822 (R)	911	Exports	
11,826	11,414	17,212	14,291 (R)	15,597	Imports	Concrete Pipes
6,006	4,236	5,505 (R)	5,989 (R)	7,386	Exports	

\* Due to changes to in European Commission product classifications Slate Roofing Tiles and Other Slate Products have been combined. Similarly, Concrete Roofing Tiles and Other Concrete Tiles and Pavings have been combined.

# EXTERNAL TRADE

**Table 14 : Value of Overseas Trade in Selected Materials and Components for Constructional Use : Imports (cif) & Exports (fob)**

United Kingdom		Current Prices (£'000)					
		2005	2006	2007	2008	2009	2010
<b>Products &amp; Components (continued)</b>							
Structural Units (steel)	Imports	308,125	361,685	526,140	564,645	470,772	604,136
	Exports	401,831	445,237	498,331	604,520	505,127	486,891
Structural Units (aluminium)	Imports	147,050	149,756	220,258	251,909	292,334	178,196
	Exports	72,729	81,708	81,777	98,289	71,158	54,971
Steel Tubes & Hollow Sections	Imports	94,193	117,181	142,420	157,616	108,794	130,955
	Exports	93,134	109,871	114,756	132,537	82,990	108,503
Bituminous Roofing Felt*	Imports	19,560	21,082	25,627	30,853	35,139	39,835
	Exports	5,439	5,756	5,406	3,507	3,392	2,744
Other Asphalt products*	Imports	9,488	8,449	9,966	9,999	9,987	10,750
	Exports	12,814	16,756	16,768	18,030	19,595	14,474
Asphalt Products*	Imports	..	..	..	..	..	..
	Exports	..	..	..	..	..	..
Mineral Insulating Materials	Imports	81,459	84,002	81,851	78,961	74,096	81,060
	Exports	115,427	137,321	139,360	132,697	106,865	146,430
Glass Fibre	Imports	1,240	2,667	1,482	1,185	552	381
	Exports	1,270	820	1,188	2,829	1,220	1,075
Fibre Cement Products	Imports	22,167	24,343	31,344	28,053	28,663	31,019
	Exports	7,403	6,619	6,668	7,680	4,847	5,849
Building Plasters <sup>1</sup>	Imports	6,740	5,726	6,172	6,868	8,845	..
	Exports	6,325	8,122	7,622	8,077	7,475	..
Plasters <sup>1</sup>	Imports	..	..	..	..	..	13,820
	Exports	..	..	..	..	..	7,905
Plasterboard	Imports	37,787	34,275	30,302	16,057	13,683	15,007
	Exports	16,723	24,261	19,798	18,397	16,505	12,912
Copper Pipes	Imports	152,310	212,455	217,861	245,212	182,487	241,116
	Exports	124,771	167,830	153,412	171,581	116,520	146,447
Lead Pipes & Fittings**	Imports	114	168	93	18	509	148
	Exports	1,768	204	48	626	209	243
Zinc Pipes & Fittings*	Imports	179	328	1,154	918	494	757
	Exports	3,989	5,446	7,166	6,016	4,388	914
Other Zinc Building Products*	Imports	11,993	14,481	12,447	13,117	10,409	13,000
	Exports	21,052	23,874	20,946	22,026	22,639	26,529
Zinc Building Products*	Imports	..	..	..	..	..	..
	Exports	..	..	..	..	..	..
Plastic Pipes	Imports	84,353	100,143	114,727	133,929	117,126	105,667
	Exports	170,734	187,793	205,332	211,718	202,745	149,389
Other Plastic Building Products	Imports	116,565	133,409	148,828	149,235	138,250	148,270
	Exports	99,630	100,498	115,008	117,407	96,902	110,278
Builders Ironmongery	Imports	389,610	452,336	498,373	505,665	278,144	312,316
	Exports	130,262	155,065	157,424	165,476	94,402	112,191
Nails & Screws	Imports	48,017	51,836	59,853	61,080	48,123	66,865
	Exports	14,170	15,228	12,553	12,851	8,281	8,949
Mastics, Putty	Imports	126,301	138,982	148,599	151,898	132,061	143,430
	Exports	82,530	95,347	103,998	119,256	110,080	115,349
Paints & Varnishes	Imports	297,691	315,961	339,581	356,451	345,977	376,374
	Exports	421,283	436,044	442,126	551,564	503,518	552,294

<sup>1</sup> From Q1 2010 onwards the Plasters category will contain Building Plaster and Other Plasters as Building Plasters data is no longer collected

## EXTERNAL TRADE

Current Prices (£'000)

2010 Q3	Q4	2011 Q1	Q2	Q3	Products & Components (continued)	
225,962	120,377	167,328 (R)	169,396 (R)	166,730	Imports	Structural Units (steel)
132,074	111,207	120,702 (R)	124,774 (R)	119,712	Exports	
51,457	37,706	42,445	44,052 (R)	75,666	Imports	Structural Units (aluminium)
15,412	11,906	14,643	14,767 (R)	16,154	Exports	
35,694	31,435	46,350	37,699 (R)	35,754	Imports	Steel Tubes & Hollow Sections
26,679	27,822	34,704 (R)	32,252 (R)	33,532	Exports	
10,183	10,214	..	..	..	Imports	Bituminous Roofing Felt*
709	631	..	..	..	Exports	
3,481	3,241	..	..	..	Imports	Other Asphalt products*
3,905	2,798	..	..	..	Exports	
..	..	12,139 (R)	13,049 (R)	14,915	Imports	Asphalt Products*
..	..	3,564	4,384 (R)	4,800	Exports	
21,812	19,068	20,087 (R)	19,512 (R)	22,026	Imports	Mineral Insulating Materials
39,416	36,276	38,559 (R)	42,232 (R)	44,242	Exports	
132	58	108	154	201	Imports	Glass Fibre
249	296	521	709	891	Exports	
8,692	7,460	7,773	8,974 (R)	9,539	Imports	Fibre Cement Products
2,170	1,539	1,316	3,056 (R)	2,830	Exports	
..	..	..	..	..	Imports	Building Plasters1
..	..	..	..	..	Exports	
3,855	3,364	2,815	3,142 (R)	2,951	Imports	Plasters1
1,940	1,783	2,369	2,428 (R)	2,238	Exports	
3,360	3,977	4,714 (R)	5,145 (R)	4,710	Imports	Plasterboard
2,986	2,678	3,795	2,901	2,756	Exports	
58,445	56,304	24,493	43,940 (R)	51,068	Imports	Copper Pipes
35,906	39,309	20,354	25,395 (R)	22,961	Exports	
0	2	..	..	..	Imports	Lead Pipes & Fittings**
96	30	..	..	..	Exports	
185	233	..	..	..	Imports	Zinc Pipes & Fittings*
84	111	..	..	..	Exports	
3,341	3,041	..	..	..	Imports	Other Zinc Building Products*
6,332	6,748	..	..	..	Exports	
..	..	3,317	3,522 (R)	2,709	Imports	Zinc Building Products*
..	..	3,317 (R)	6,960 (R)	5,074	Exports	
26,685	24,247	29,445 (R)	29,331 (R)	30,674	Imports	Plastic Pipes
41,104	32,597	39,025 (R)	39,968 (R)	39,648	Exports	
40,623	33,508	37,757 (R)	40,791 (R)	39,996	Imports	Other Plastic Building Products
30,966	26,971	28,533 (R)	35,661 (R)	27,032	Exports	
80,118	75,332	77,725 (R)	75,253 (R)	81,006	Imports	Builders Ironmongery
28,920	28,013	33,929 (R)	33,009 (R)	31,330	Exports	
19,447	16,338	16,168 (R)	15,545 (R)	17,310	Imports	Nails & Screws
2,393	2,191	2,103 (R)	3,524 (R)	2,928	Exports	
36,807	34,686	34,221 (R)	39,032 (R)	41,760	Imports	Mastics, Putty
29,581	28,892	33,337	37,240 (R)	34,814	Exports	
101,100	88,948	97,995 (R)	101,251 (R)	109,411	Imports	Paints & Varnishes
147,481	135,902	148,908 (R)	167,079 (R)	155,416	Exports	

\* Due to changes to in European Commission product classifications Bituminous Roofing Felt and Other Asphalt products have been combined. Similarly, Zinc Pipes & Fittings and Other Zinc Building Products have been combined.

\*\* Data for Lead Pipes and Fittings are no longer collected.

# EXTERNAL TRADE

**Table 14 : Value of Overseas Trade in Selected Materials and Components for Constructional Use : Imports (cif) & Exports (fob)**

United Kingdom		Current Prices (£'000)					
		2005	2006	2007	2008	2009	2010
<b>Products &amp; Components (continued)</b>							
Unglazed Ceramic Tiles	Imports	48,737	54,271	64,691	71,099	62,181	56,551
	Exports	2,777	2,475	4,420	3,607	2,424	2,829
Glazed Ceramic Tiles	Imports	285,488	285,080	290,867	279,656	256,303	224,557
	Exports	17,217	21,444	20,554	17,706	15,671	15,455
Ceramic Sanitaryware	Imports	157,865	173,687	181,603	174,194	159,123	168,666
	Exports	48,004	54,231	58,229	53,471	37,635	37,883
Plastic Sanitaryware	Imports	98,663	105,586	126,472	120,004	114,695	112,513
	Exports	68,603	78,717	78,811	83,908	79,444	67,886
Metal Sanitaryware	Imports	110,303	123,203	139,820	143,118	111,737	124,666
	Exports	34,553	32,212	33,511	33,167	31,969	28,274
Flat Glass	Imports	53,410	55,901	71,800	61,061	53,819	61,048
	Exports	51,502	67,142	83,174	107,783	60,380	73,175
Other Glass Products	Imports	67,274	78,695	76,235	98,993	82,857	81,083
	Exports	25,896	31,631	37,712	40,296	34,188	33,081
Wood Veneers	Imports	35,329	40,586	38,516	39,407	26,102	31,681
	Exports	9,663	10,607	10,243	10,034	5,747	5,824
Wood Mouldings	Imports	69,452	79,513	73,907	64,579	55,648	66,802
	Exports	18,922	20,362	18,289	11,169	8,861	9,660
Wood Block Flooring	Imports	117,318	132,978	125,111	125,242	112,661	144,394
	Exports	8,086	8,448	5,465	6,136	5,746	4,535
Other Builder's Woodwork	Imports	78,356	93,869	109,023	101,242	80,645	99,394
	Exports	13,299	21,562	19,079	15,908	14,395	14,319
Windows (wood)	Imports	66,201	71,679	84,257	121,171	110,061	111,934
	Exports	5,693	9,465	12,880	10,219	10,721	7,786
Doors (wood)	Imports	164,036	191,637	205,158	209,133	184,609	217,810
	Exports	29,901	38,546	37,008	26,929	19,395	16,873
Doors & Windows (steel)	Imports	57,661	54,493	40,294	39,652	39,726	35,987
	Exports	20,146	21,231	25,824	26,300	20,643	19,222
Doors & Windows (aluminium)	Imports	61,543	68,235	65,655	63,705	64,279	72,365
	Exports	27,784	35,883	32,687	25,473	24,410	19,950
Doors & Windows (plastic)	Imports	27,227	41,045	39,459	39,377	43,885	46,337
	Exports	63,205	68,641	63,218	56,119	41,193	44,433
Cork Tiles	Imports	2,042	2,540	2,877	2,258	1,779	2,951
	Exports	1,661	2,878	1,611	1,641	1,702	1,646
Linoleum Floor Coverings	Imports	179,151	213,518	242,787	256,585	244,149	279,065
	Exports	178,384	188,215	195,735	224,522	213,628	228,832
Wallpaper	Imports	39,128	40,997	58,962	58,636	54,487	56,701
	Exports	55,455	54,868	67,165	73,506	66,782	82,940
Textile Wall Coverings	Imports	1,314	1,187	1,572	2,833	2,346	3,323
	Exports	485	373	598	500	357	609

Current Prices (£'000)

2010 Q3	Q4	2011 Q1	Q2	Q3	Products & Components (continued)	
15,249 858	13,759 741	14,954 (R) 814	16,564 (R) 545	16,373 793	Imports Exports	Unglazed Ceramic Tiles
57,879 4,262	57,008 4,302	58,878 (R) 4,525	53,157 (R) 4,680 (R)	51,412 4,337	Imports Exports	Glazed Ceramic Tiles
39,713 10,339	42,636 10,160	49,018 9,849 (R)	42,218 (R) 10,282 (R)	42,786 9,027	Imports Exports	Ceramic Sanitaryware
28,347 17,917	26,287 14,843	27,608 (R) 17,181 (R)	26,124 (R) 15,806 (R)	27,593 15,267	Imports Exports	Plastic Sanitaryware
29,801 6,768	33,644 7,791	36,003 (R) 8,378 (R)	35,519 (R) 8,876 (R)	32,845 8,039	Imports Exports	Metal Sanitaryware
16,823 20,330	17,798 17,774	15,263 22,498	15,040 (R) 22,737 (R)	17,385 32,049	Imports Exports	Flat Glass
22,195 8,404	18,866 8,564	20,059 (R) 8,876 (R)	20,596 (R) 7,462 (R)	23,494 9,019	Imports Exports	Other Glass Products
7,229 1,474	9,801 1,935	8,993 1,564	9,486 (R) 1,762	8,893 2,546	Imports Exports	Wood Veneers
17,706 2,662	13,097 2,110	18,688 (R) 2,393	15,473 (R) 2,446 (R)	13,393 2,354	Imports Exports	Wood Mouldings
39,610 981	34,496 1,252	35,885 (R) 1,129	32,822 (R) 1,138	35,995 914	Imports Exports	Wood Block Flooring
27,498 3,894	23,905 3,998	21,758 (R) 4,274 (R)	24,285 (R) 3,976 (R)	22,839 3,827	Imports Exports	Other Builder's Woodwork
28,965 1,592	28,930 1,972	27,663 (R) 2,786	29,362 (R) 2,439 (R)	31,057 2,701	Imports Exports	Windows (wood)
62,658 4,618	52,043 4,789	50,331 (R) 2,927 (R)	54,873 (R) 3,913 (R)	51,064 3,441	Imports Exports	Doors (wood)
9,966 4,730	9,421 5,421	9,145 4,487	8,652 4,362 (R)	9,040 4,988	Imports Exports	Doors & Windows (steel)
18,944 5,361	23,013 4,529	15,951 (R) 5,117	17,954 (R) 6,108 (R)	20,111 5,269	Imports Exports	Doors & Windows (aluminium)
9,964 10,460	11,171 9,375	11,896 (R) 7,238	13,203 (R) 14,141 (R)	14,774 8,848	Imports Exports	Doors & Windows (plastic)
819 435	732 408	1,574 604	871 874	776 376	Imports Exports	Cork Tiles
71,311 58,049	73,018 50,649	75,730 (R) 56,085	84,124 (R) 62,849 (R)	78,706 59,823	Imports Exports	Linoleum Floor Coverings
12,587 19,922	13,737 22,007	15,162 23,181 (R)	15,506 (R) 23,070 (R)	12,325 19,623	Imports Exports	Wallpaper
942 163	870 148	689 137	653 108	894 162	Imports Exports	Textile Wall Coverings

# EXTERNAL TRADE

**Table 14 : Value of Overseas Trade in Selected Materials and Components for Constructional Use : Imports (cif) & Exports (fob)**

United Kingdom		Current Prices (£'000)					
		2005	2006	2007	2008	2009	2010
<b>Products &amp; Components (continued)</b>							
Fitted Kitchens (assembled)	Imports	88,220	98,938	144,017	171,688	130,058	111,345
	Exports	38,898	34,260	35,322	24,163	17,307	16,122
Prefabricated Buildings (wood)	Imports	18,617	21,986	49,086	40,341	34,264	32,687
	Exports	14,075	22,603	27,807	15,170	13,234	10,546
Prefabricated Buildings (steel)	Imports	25,459	30,281	30,083	50,546	46,291	29,783
	Exports	12,814	42,881	27,464	46,140	48,512	37,158
Prefabricated Buildings (other)	Imports	52,602	67,586	73,414	74,165	44,887	34,323
	Exports	90,503	45,997	35,795	72,310	28,104	17,643
Mobile Homes	Imports	8,300	7,196	7,113	6,574	5,065	2,165
	Exports	12,000	8,574	11,291	7,250	7,750	3,666
Taps & Valves	Imports	209,659	265,657	277,804	315,427	269,199	322,207
	Exports	51,133	62,345	72,708	60,597	64,447	73,202
Pumps (circulating)	Imports	20,706	25,544	24,274	21,754	19,900	21,878
	Exports	24,986	28,407	27,131	27,964	23,603	32,078
Central Heating Boilers	Imports	433,201	473,691	493,841	547,726	566,588	554,452
	Exports	72,126	76,578	70,581	80,756	91,053	74,832
Radiators	Imports	173,674	193,948	197,513	184,218	175,518	189,792
	Exports	30,596	37,707	46,937	57,884	34,303	31,085
Water Heaters	Imports	64,514	75,237	88,897	105,755	105,711	84,627
	Exports	70,225	67,902	64,471	84,810	64,883	63,036
Space Heaters	Imports	139,190	120,029	107,581	110,403	114,047	136,729
	Exports	47,604	39,930	37,313	35,118	32,068	32,001
Fan Systems	Imports	134,486	152,830	198,750	161,772	127,327	172,161
	Exports	94,317	132,081	94,651	114,006	107,846	109,339
Air Conditioning Equipment	Imports	360,514	379,149	514,454	644,353	462,588	527,857
	Exports	218,235	201,257	231,144	268,134	240,594	270,112
Air Purifying Equipment	Imports	37,950	31,441	29,828	41,389	50,854	53,220
	Exports	108,351	114,377	120,706	138,002	102,158	148,638
Hand Driers	Imports	3,887	5,010	4,057	7,634	7,443	8,987
	Exports	1,177	1,036	1,648	1,017	1,247	1,905
Meters	Imports	20,971	25,666	24,502	24,155	24,237	28,701
	Exports	22,699	25,025	26,216	47,988	42,969	52,825
Plugs & Sockets	Imports	183,550	232,657	231,664	269,479	257,049	303,121
	Exports	106,743	169,346	148,672	153,173	137,529	182,364
Electrical Wires	Imports	789,156	1,028,495	1,303,905	1,236,486	909,830	1,213,470
	Exports	392,062	458,568	521,508	554,723	425,815	515,544
Electrical Insulators	Imports	32,793	37,729	30,477	34,957	29,102	30,596
	Exports	38,222	28,858	33,830	32,548	26,983	32,574
Lamps & Fittings	Imports	354,173	392,781	449,230	462,930	424,435	515,852
	Exports	179,800	195,049	221,180	236,971	223,741	216,816
Fire & Security Alarms	Imports	140,511	153,054	144,891	139,973	136,550	151,642
	Exports	130,795	150,929	154,520	182,447	238,608	208,281
Lifts & Escalators	Imports	112,695	104,250	118,401	129,307	115,017	96,973
	Exports	11,664	24,833	43,142	28,699	19,697	14,628

## EXTERNAL TRADE

Current Prices (£'000)

2010 Q3	Q4	2011 Q1	Q2	Q3	Products & Components (continued)	
31,054	26,254	20,416	20,495 (R)	20,162	Imports	Fitted Kitchens (assembled)
4,834	4,348	3,740	4,319 (R)	3,695	Exports	
7,908	5,891	8,491	10,834 (R)	8,994	Imports	Prefabricated Buildings (wood)
1,957	1,632	1,508 (R)	2,857 (R)	1,955	Exports	
9,184	7,155	9,898	12,310	6,054	Imports	Prefabricated Buildings (steel)
7,949	7,702	9,088 (R)	16,862 (R)	7,856	Exports	
9,826	4,213	8,097	10,612 (R)	4,789	Imports	Prefabricated Buildings (other)
3,750	2,609	4,378	4,340 (R)	5,437	Exports	
639	137	139	751	299	Imports	Mobile Homes
1,019	871	721	418	726	Exports	
83,429	75,566	88,610 (R)	82,436 (R)	79,898	Imports	Taps & Valves
20,022	19,355	16,347	17,658 (R)	15,391	Exports	
5,310	4,920	6,432	4,405 (R)	5,525	Imports	Pumps (circulating)
13,555	5,755	6,347	5,016	3,309	Exports	
132,789	158,840	150,319	122,517 (R)	146,461	Imports	Central Heating Boilers
17,723	22,911	21,394	17,852 (R)	15,724	Exports	
45,041	47,595	53,811	40,654 (R)	39,445	Imports	Radiators
7,506	7,994	7,081	3,827	8,285	Exports	
23,576	21,136	20,465	22,801 (R)	23,016	Imports	Water Heaters
14,700	16,573	18,557 (R)	16,873 (R)	16,859	Exports	
37,727	44,891	30,341	24,079 (R)	41,469	Imports	Space Heaters
7,277	10,348	8,478 (R)	6,226 (R)	8,031	Exports	
46,602	40,838	45,024 (R)	50,557 (R)	48,764	Imports	Fan Systems
27,361	31,218	29,222 (R)	31,354 (R)	30,996	Exports	
142,408	118,316	156,298 (R)	148,162 (R)	150,397	Imports	Air Conditioning Equipment
64,426	67,467	66,709	70,182 (R)	65,510	Exports	
13,836	14,799	16,964 (R)	15,221 (R)	18,208	Imports	Air Purifying Equipment
41,626	41,816	47,528 (R)	45,410 (R)	47,095	Exports	
2,281	2,465	2,567	2,155	2,709	Imports	Hand Driers
508	520	395 (R)	484 (R)	578	Exports	
6,896	6,943	5,776	6,454 (R)	16,211	Imports	Meters
16,690	13,392	15,115 (R)	18,946 (R)	21,107	Exports	
81,298	78,681	83,507 (R)	80,855 (R)	86,461	Imports	Plugs & Sockets
48,154	44,842	52,825 (R)	56,249 (R)	55,817	Exports	
318,627	325,208	359,529 (R)	312,630 (R)	317,932	Imports	Electrical Wires
131,586	130,740	140,877 (R)	138,076 (R)	146,456	Exports	
6,179	6,714	7,150	6,583 (R)	7,378	Imports	Electrical Insulators
7,721	7,200	7,772	7,599 (R)	7,216	Exports	
144,384	128,479	124,480 (R)	127,764 (R)	132,157	Imports	Lamps & Fittings
56,647	59,018	62,089 (R)	64,126 (R)	67,473	Exports	
40,680	35,061	35,097	29,055 (R)	26,845	Imports	Fire & Security Alarms
44,773	43,892	46,391 (R)	42,632 (R)	42,081	Exports	
24,329	23,649	24,853 (R)	26,789 (R)	27,153	Imports	Lifts & Escalators
4,185	4,142	6,464 (R)	4,724 (R)	4,756	Exports	

© Crown copyright 2012

Published under licence from the Controller of Her Majesty's Stationery Office.

Applications for reproductions should be made in writing to :-

The Copyright Unit, Her Majesty's Stationery Office, St. Clements House,  
2-16 Colegate, Norwich NR3 1BQ

January 2012

URN 11 / 3131

ISSN 0264-6188